



Bedfordshire Independent Custody Visiting Scheme

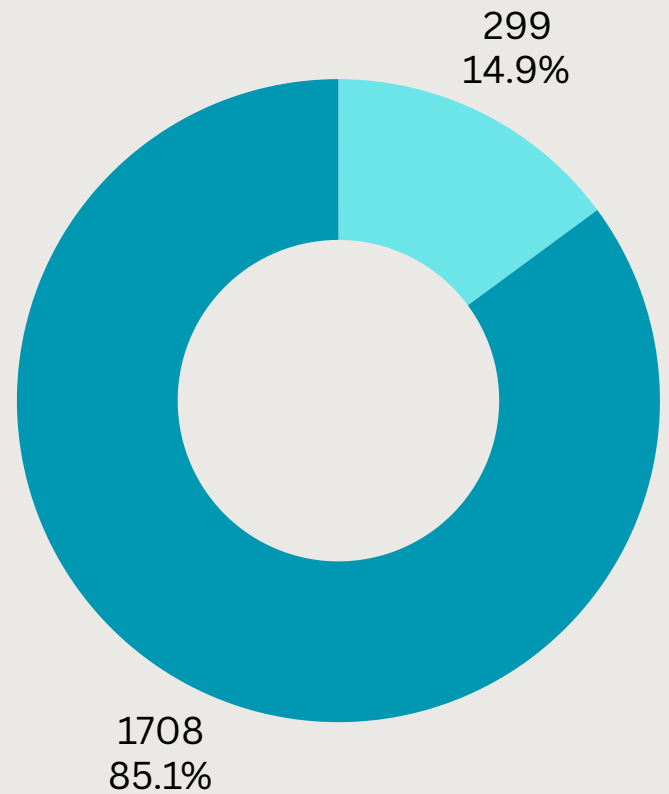
March 2025 Bulletin



This Quarters Custody Data

- Kempston
- Luton

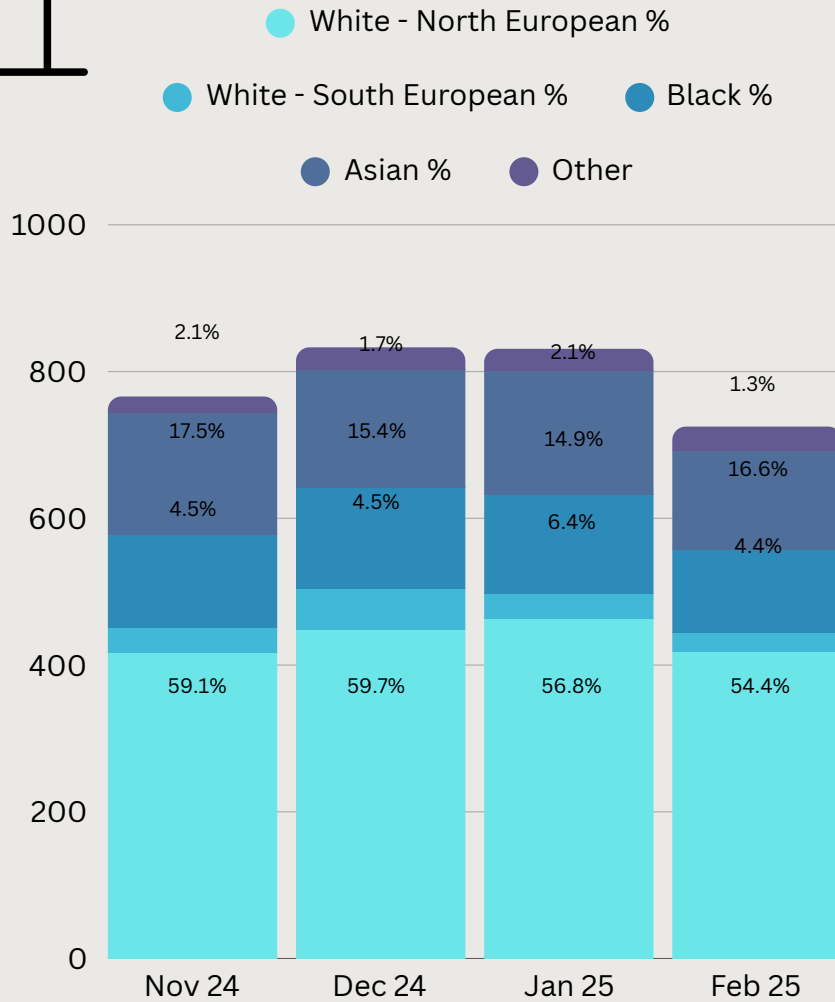
The custody unit at Luton Police Station closed for 14 weeks as part of a major refurbishment. Luton closed mid January and is expected to reopen at the end of April 2025. The figures below includes Bedfordshire detainees who were sent to Hertfordshire as a result of the Luton custody closure.



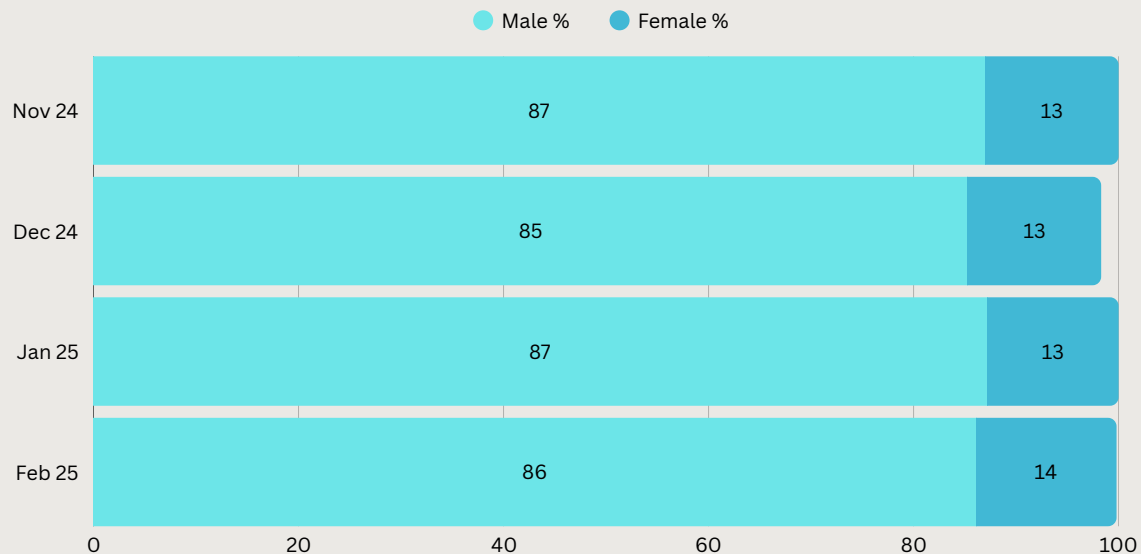
Month	Luton	Kempston	Beds detainees sent to Herts	Total
Jan 2025	299	488	57	844
Feb 2025	0	571	161	732
Mar 2025	0	649	119	768



Custody Data for this Quarter



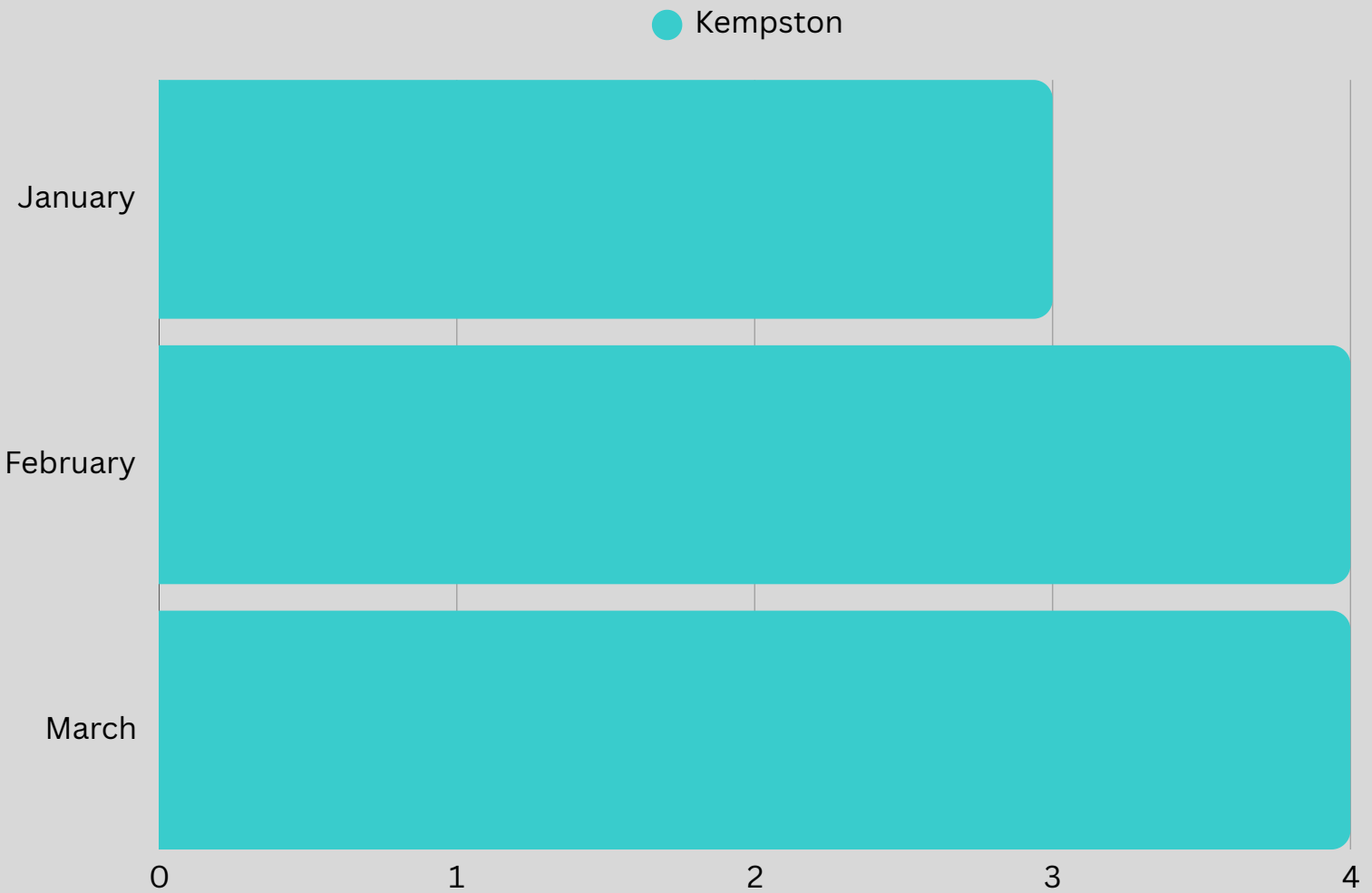
Graph showing custody detentions by officer defined ethnicity



Graph showing detainees according to gender

11

ICV visits to Bedfordshire Police Custody Suites



Detainees
visited by
ICVs in
Bedfordshire

93

Issues Raised from ICVs

Quran and mats were not stored correctly and not placed in the correct areas

The religious materials area has now been reorganised and items are now stored correctly

Sinks in both shower suites needed cleaning

This has now been cleaned.

ICVs found the halal food certificates were out of date and the others are soon to expire

This has been fed back to the custody inspector to investigate

ICV thought it was concerning how busy Kempston custody suite was

Due to Luton custody closure, the Kempston suite has been extremely busy. It is due to go back to normal once Luton reopens

ICV found that there is a lack in non-English reading material

The OPCC will have a look at alternative methods of gathering non-English reading material for custody suites

Custody Update



The custody unit at Luton Police Station is currently closed for 14 weeks as part of a major refurbishment, which will include new CCTV, a new cell call system, upgraded panic alarm notification setting and a dedicated search room.

Currently all detainees are taken to our HQ Custody in Kempston where there is a total of 22 cells.

An arrangement has also been put in place with Hatfield Custody, who have allocated 10 cells which will be staffed by Bedfordshire custody staff; one sergeant and two detention officers per shift.

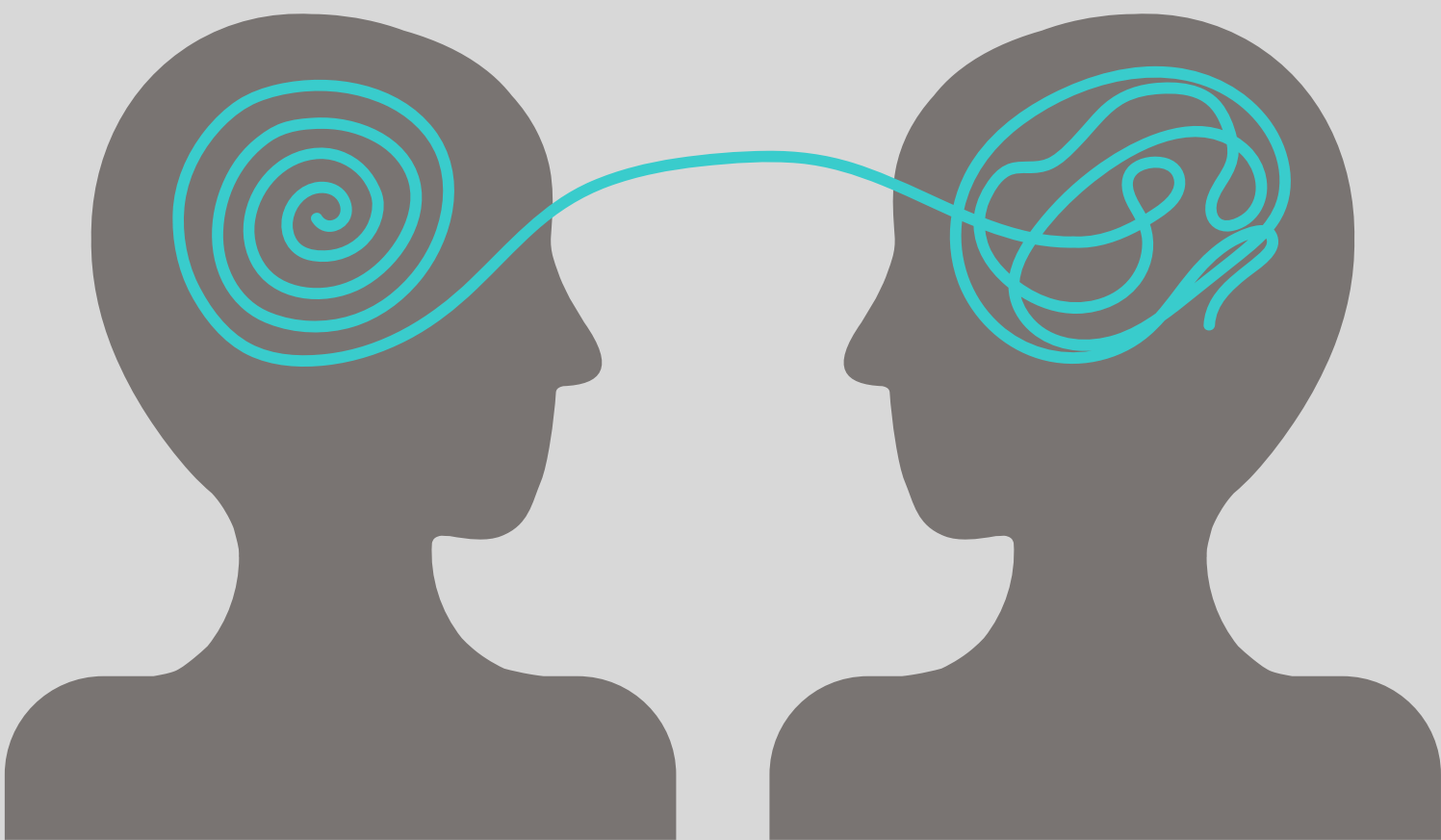
Within this quarter, ICVs could only conduct visits in the Kempston custody suite. The custody suite is anticipated to reopen on the 25th of April. ICVs have been invited to attend the custody suite prior to the reopening to provide their thoughts.

Mental Health in Custody Training

Within March quarterly panel meeting, ICVs were given an insight into the mental health of detainees. An Inspector from the Mental Health Hub covered the current mental health statistic, the current picture in Bedfordshire, processes and legislation governing police actions, the right care right person initiative and how to recognise signs of mental health and how to communicate with those going through a mental health crisis.

This was held on the 25th of March 2025.

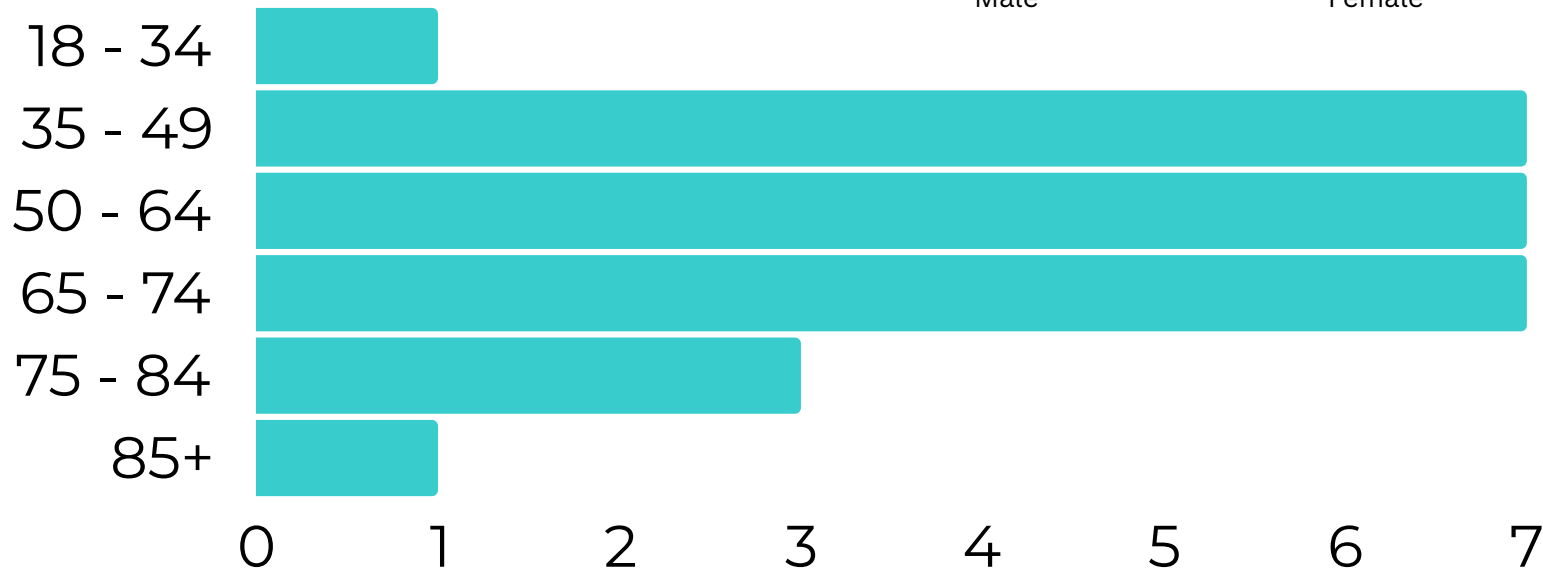
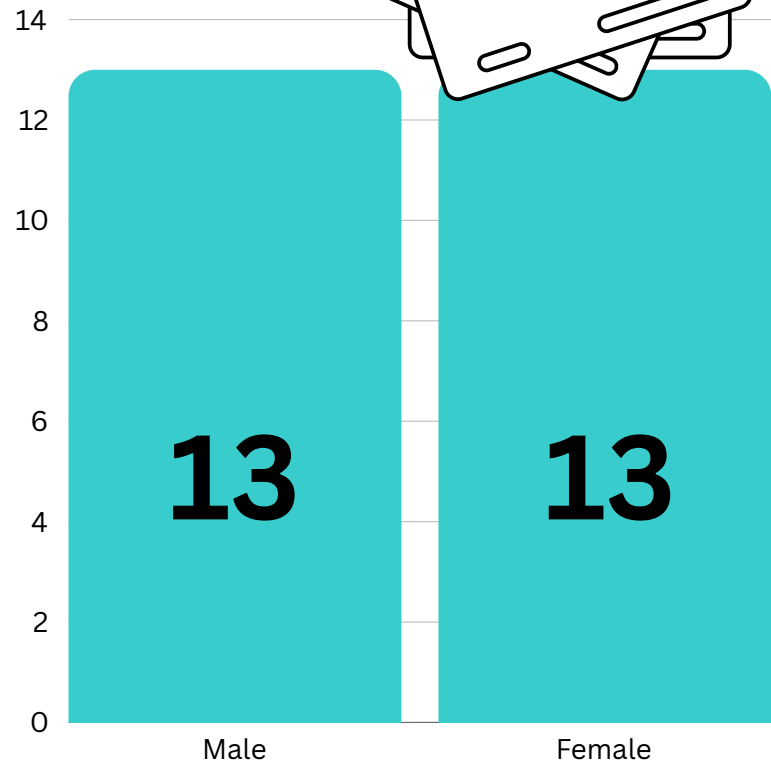
A joint training session was held with all of our scrutiny panels.



Recruitment



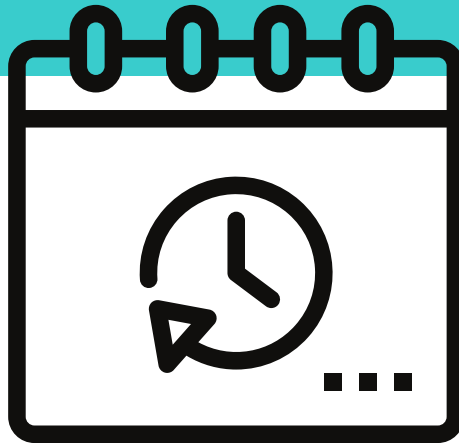
26
volunteers



One of our aims is to continue to recruit from diverse backgrounds so that we can accurately represent the community of Bedfordshire.

This quarter we have recruited 2 new ICVs who are currently undergoing vetting. Once they have received clearance they will be given training before conducting ICV visits.

Dates for the Diary



- ICV Panel Meeting - Wednesday 25th June 2025
- ICV Panel Meeting - Monday 29th September 2025
- ICV Panel Meeting - Thursday 18th December 2025

ICVA Resources

Over the past quarter ICVA has produced the following resources:

[Non-PACE Areas Complaints Briefing](#)

[Updated Strip and Intimate Search Briefing](#)

[Updated Immigration Detainee Briefing](#)



CALLING ALL VOLUNTEERS!

SCAN ME



Bedfordshire Independent Custody Visiting Scheme



Can you spare some time for your local community?

WHO ARE WE?

- We are members of the local community who visit police custody suites unannounced to check on the treatment of detainees, the conditions in which they are being held and that their rights and entitlements are being observed.

WHO CAN BE A VISITOR?

- Subject to certain exceptions anyone can apply to be an ICV. Visitors must be more than 18 years old, have been a resident in the UK for at least three years prior to the date of application and currently reside, work or study in Bedfordshire.

Interested in joining us or would you like to find out more information?

Contact us:
PCC@beds.police.uk



Office of the
Bedfordshire
Police & Crime
Commissioner

