



Bedfordshire Police

Compassionate | Courageous | Inclusive | Professional | Proud

The Chief Constable for
Bedfordshire Police

STATEMENT OF ACCOUNTS

2023/2024

Table of Contents

TABLE OF CONTENTS	2
NARRATIVE REPORT	3
STATEMENT OF RESPONSIBILITIES	12
ANNUAL GOVERNANCE STATEMENT	13
COMPREHENSIVE INCOME AND EXPENDITURE STATEMENT	28
MOVEMENT IN RESERVES STATEMENT	29
BALANCE SHEET	30
NOTES TO THE ACCOUNTS	32
NOTE 2 EXPENDITURE AND FUNDING ANALYSIS	37
EXTERNAL ADVISERS.....	62
GLOSSARY OF TERMS.....	63
INDEPENDENT AUDITOR'S REPORT TO THE CHIEF CONSTABLE FOR BEDFORDSHIRE POLICE	64

Narrative Report

The Narrative Report pulls together in a single document information on the budget preparation process, final accounts, performance information, medium term financial plans and other contextual information such as workforce numbers and strategic risks. I hope you find it helpful, I would welcome feedback on the content so that we can continue to improve and enhance next year's narrative report on the 2023/24 accounts.

Bedfordshire Police continued its improvement in ensuring that the Force was at full strength, following on from the improvements since 18/19 the force has continued to meet its annual recruitment targets.

This is a positive picture for Bedfordshire in terms of increasing officers, but does create specific demand and cost issues with a significant increase in student officers within the Force at any one time and also the status of the physical and non-physical infrastructure within the Force.

The level of training officers require before they are productively engaged in policing means that, for a period of time, we have the costs of the additional officers but not their operational hours hence the demands on police overtime for example do not decrease in the same period.

In Bedfordshire the implications of delivering a service to meet increasing demand and complexity whilst operating with finite resources is fully appreciated. Considerable work is focused on challenging the effectiveness and efficiency of our service, constantly driving to ensure our resources are directed to the highest priority areas and as a result have embedded the Priority Based Budgeting process.

As a police service we try to anticipate demand and ensure our strategic plans address the changing landscape both in the scope and complexity of crime but also the technology and equipment available to enhance the delivery of our service. We also always have to be prepared for the unexpected and be ready for an immediate response whatever the circumstances.

The Statement of Accounts has been prepared in accordance with the requirements of the Chartered Institute of Public Finance and Accountancy (CIPFA). It therefore aims to provide information to help the reader:

- Understand the overarching financial position of the PCC (and the Force)
- Have confidence that the PCC has spent public money wisely and it has been accounted for in an appropriate manner
- Be assured that the financial position of the PCC (and Group) is sound and secure

The style and format of the accounts complies with CIPFA standards and is similar to that of previous years.

The structure of this Narrative Report is set out below.

1. Explanation of the PCC and Group
2. Introduction to Bedfordshire Police
3. Financial performance
4. Non-financial performance
5. Coronavirus (Covid-19) pandemic
6. Summary and conclusion

1. EXPLANATION OF THE PCC AND GROUP

The Police & Crime Commissioner (PCC) and the Chief Constable are established as separate legal entities.

The PCC is elected by the public every four years to secure the maintenance of an efficient and effective police force and to hold the chief constable to account for the exercise of his functions and those of persons under his direction and control.

The Chief Constable has a statutory responsibility for the control, direction and delivery of operational policing services in the Bedfordshire Police area.

The Chief Constable has produced this set of accounts which explains how the resources provided by the PCC have been used to deliver operational policing services.

The Net Revenue Budget for 2023/24 was £139.938 million, of which £137.513 million was delegated to the Chief Constable.

2. AN INTRODUCTION TO BEDFORDSHIRE POLICE FORCE

We are dedicated to "protecting people and fighting crime together".

At 477 square miles and with 705,000 people Bedfordshire is one of England's smallest (yet most diverse), counties and faces complex crime challenges more usually seen in large metropolitan cities. The population has grown by 19% since 2002 and the population is currently still growing faster than the population of England and Wales.

More than half of its residents live in its largest towns Luton and Bedford which have diverse and often transient communities, alongside smaller market towns and rural parishes.

London Luton Airport handled 16 million passengers in 2023 and remains one of the busiest airports in the UK. The M1 and A1(M) motorways traverse the county. Two principle railway lines connect people with the heart of London in less than an hour.

Bedfordshire has a complex mix of volume crime, serious crimes, drugs, gangs and terrorism threats. Every day our officers meet threats, harm and risks like those in large cities. In the year to October 2023 the force recorded 49,091 crimes (a decrease of 6.7 per cent) and answered more than 311,000 calls for service.

Among all English police forces, Bedfordshire receives one of the lowest Government grants per head of population and is in the lowest quartile for budget and police officers per head of population, and for council tax levels. As an organisation we are striving to be innovative to enhance productivity and allow technology to deal with demand that doesn't require human intervention.

Bedfordshire Police's community, response and investigation teams serve the unitary authorities of Luton, Bedford and Central Bedfordshire from two operational hubs. Strategic leadership of regional intelligence and investigation helps the Force meet risks linked to extremism and organised crime.

Bedfordshire still has one of the lowest net budgets of all English police forces. Bedfordshire is addressing its challenges through internal change and service-leading collaborations with neighboring and regional police forces.

The force is has made considerable efficiencies by collaborating large areas of its business with neighboring Cambridgeshire and Hertfordshire. This includes functions such as Protective Services which encompasses everything from the Beds, Cambs and Herts Major Crime Unit to Roads Policing, Scientific Services and Firearms as well as support services departments. Meanwhile Bedfordshire is also proud to be the lead force for the Eastern Region Special Operations Unit (ERSOU) and Eastern Region Counter Terrorism Policing Unit. The force continues to look at opportunities that can be achieved through working with the 7 Eastern Region forces (Existing Tri-force associations plus Norfolk, Kent Essex and Suffolk).

The Force has now fully embedded its Priority Based Budgeting process which provides the Force with an overall costed service catalogue that allows for a full understanding of the service we would deliver for less or what opportunities and benefits we would get for additional investments and resources.

3. FINANCIAL PERFORMANCE

a. Revenue Budget 2023/24

The increase in the size of the net revenue budget of £3.9M in 2023/24 compared to 2022/23 was made possible by the decision to raise Council Tax by £15, the maximum allowed without a local referendum. The Police Grant only increased by £0.269M and the Police & Crime Commissioner agreed to use £0.5M of reserves to help support the budget. This enabled him to continue with his commitment to increase officer numbers within Bedfordshire, rising by a further 10, to a total of 1,466 (1,433 FTE), the highest number Bedfordshire Police has ever had.

b. Revenue Outturn 23/24

The additional grant received as a result of reaching additional recruitment targets allowed the force to deliver an overall underspend of £0.053 million.

The total 2023/24 Revenue Budget allocated by the PCC for Bedfordshire to the Chief Constable for operational policing and support functions was £137.513M; actual expenditure amounted to £137.460.

The under spend for the year of £0.053 arose in the following areas:

	£'M
Police Pay	1.532
Police Overtime	1.887
Staff Costs (inc Agency and Overtime)	0.575
Non-Staff Costs	0.158
Externally Funded & Income	-0.526
Collaboration	-0.653
Grants	-6.314
Operation Costello	3.011
Contribution to Reserves	0.277
Total	-0.053

The outturn position of the Chief Constable includes different elements to that reported in the financial accounts and a full reconciliation of the reported outturn to the financial accounting surplus / deficit is shown at group level in the PCC's Group accounts.

c. Outlook – Medium Term Financial Plan

The increase in the size of the net revenue budget of £3.9M in 2023/24 compared to 2022/23 was made possible by the decision to raise Council Tax by £15, the maximum allowed without a local referendum. The Police Grant only increased by £0.269M and the Police & Crime Commissioner agreed to use £0.5M of reserves to help support the budget. This enabled him to continue with his commitment to increase officer numbers within Bedfordshire, rising by a further 10, to a total of 1,466 (1,433 FTE), the highest number Bedfordshire Police has ever had. The medium-term financial plan covering the next four years, between 2024/25 and 2027/28, that is constantly being reviewed, also places reliance on reserves to assist in balancing the budget, and it is likely that consideration will need to be given to the replenishment of these reserves over the same period. It is helpful to be aware of some specific context in relation to the current financial environment as highlighted below.

- Bedfordshire Police has received a Special Police Grant, in relation to its Boson capability since 2018/19, providing additional funding in support of targeted operations against the use of Guns and Gangs in Bedfordshire and Luton. In addition the force received Special Police Grant funding for Op Costello and similar bids have been submitted for the new financial year, 2024/25 and continuation funding is expected at slightly lower levels as the Force is asked to contribute higher levels of matched funding. The force has been awarded £6.9M via special grant for Operation Boson and Costello which is the same level of funding as 2023/24.
- The 2024/25 budget incorporates a top up to reserves of £0.298M
- The Council Tax increase was capped at £13 per Band D property
- An increasing percentage of the annual budget is spent on areas of policing delivered by collaborated units. While this has provided savings for the Force and increased resilience, the priorities for Bedfordshire within those service areas that are collaborated have to be considered alongside those of Hertfordshire and Cambridgeshire Constabularies.

The budget for 2024/25 is based on a police grant of 82.1M, an increase of £4.6M compared to last year covering the police pay award in September 2023.. We will see an increase to the uplift and recruitment grant to take that to £4.8M, an increase of £2.8M to the pension grant which is to fund an increase in employers pension contributions and legacy council tax grants are maintained at £4.637M. The budget reflects the higher than anticipated pay award in September 2023 and it contains a contingency to fund a 2.5% pay award in September 2024.

Prior to setting the budget a number of medium-term financial plan scenarios had been tested and these continued to be revised until the budget was agreed. These helped the Commissioner to take the decision to increase Council Tax by the maximum amount expected to be allowed, this equated to £13 for a band D household.

In considering the 2024/25 budget the Commissioner has continued to utilise the maximum amount of funding he can generate allowing him to increase both officer and staff numbers to ensure a better service is provided to the public of Bedfordshire as set out in the Police & Crime Plan. For illustrative purposes we have shown a budget gap from 2025/26 onwards, noting that this could be closed using reserves or additional savings and there is plenty of time to plan for this. The Government has committed to review the funding formula within the period covered by the medium-term plan so the figures used must only be considered as provisional.

	2024/25 Indicative	2025/26 Estimated	2026/27 Estimated	2027/28 Estimated
	£'000	£'000	£'000	£'000
Estimated draft budget (a)	156,400	156,066	159,928	164,618
Estimated funding (b)	149,164	152,485	157,044	161,735
Shortfall (a-b)	7,236	3,581	2,884	2,883
Savings	-2,144	-298	0	0
Grant increases	-5,092	0	0	0
Budget Shortfall	0	3,283	2,884	2,883

d. Capital

In addition to spending on day to day activities, the PCC incurs expenditure on land and buildings, information technology and other items of plant and equipment which have a longer term life.

The PCC has approved a Capital Programme costing £22 million over the next four years, which will provide the Force with appropriate infrastructure and assets to deliver innovative policing strategies with fewer resources.

The Capital Programme will be funded through a combination of borrowing, capital grants, revenue contributions, capital receipts and PCC reserves.

e. Accounting Changes compared to 2022/23

The draft accounts for 2023/24 are prepared based on the roll forward of balances in the 2022/23 draft accounts which is still subject to audit. There have been widespread delays to local authority audits in the audit sector and for the PCC for Bedfordshire Group the 2021/22 audit is still to commence. However the government has set a target for these backlogs to be fully cleared by 30th September 2024.

The Chief Constables Net Cost of Services which is chargeable to the general fund increased £14M. This is largely due to expenditure on officer pay brought about by a 7.5% pay increase in the year and by the uplift in officer numbers previously discussed, as well as innovation costs, for both the funding is recognised in the PCCs accounts. In addition our regional capabilities increased with funding for that also shown in the PCC's accounts.

The accounting adjustments decreased considerably, mainly due to the impact of changes made to the pension valuation assumptions as current service costs have gone from £47.050M in 22/23 to £17.208M in 23/24, these accounting adjustments are shown in the Expenditure and Funding Analysis and related notes and explained more at Note 25 Defined Benefit Pension Schemes. This swing in current service costs affects the deficit on the provision of services shown in the Comprehensive Income and Expenditure Statement bringing it from £48.564M in 22/23 to £24.399M for the group in 23/24.

f. Pension Liabilities

The balance sheet includes a liability of £949M which is the commitment that the Chief Constable for Bedfordshire has in the long-term, to pay retirement benefits. This liability has a substantial impact on the net worth of the Chief Constable as recorded in the balance sheet, resulting in a negative overall balance of £934M.

The Police Officer pension scheme is an unfunded scheme administered by the Chief Constable, meaning there are no assets built up to meet the pension liabilities, and cash has to be generated to meet actual pension payments as they eventually fall due. Both police officers and the employer (i.e. the Chief Constable) make annual contributions which are paid into the Police Pension Fund. Pensions are paid from the Fund. The Home Office funds the difference between actual pension payments and pensions income through an annual top-up grant.

Police staff are eligible to join the Local Government Pension Scheme (LGPS) administered by Bedfordshire Borough Council. This is a funded scheme whereby assets are invested to help fund future liabilities. In 2023/24 the Group paid an employer's contribution representing 18.3% of pensionable pay plus a monetary amount of £585,00 which was informed by the last valuation in April 2022, which reported a funding level of 100%.

4. NON-FINANCIAL PERFORMANCE

What We Want To Achieve

The Chief Constable's Control Strategy sets out what the force wants to achieve and directly supports the delivery of the Commissioner's Police & Crime Plan. It sets out strategic objectives for delivery to enable the force to achieve its vision of becoming a well-respected, high performing, efficiently run police service working together to protect people, fight crime and keep Bedfordshire safe. It is broken down further into the Annual Delivery Plan 2023/24.



The main risks the Chief Constable faces in achieving these objectives are:

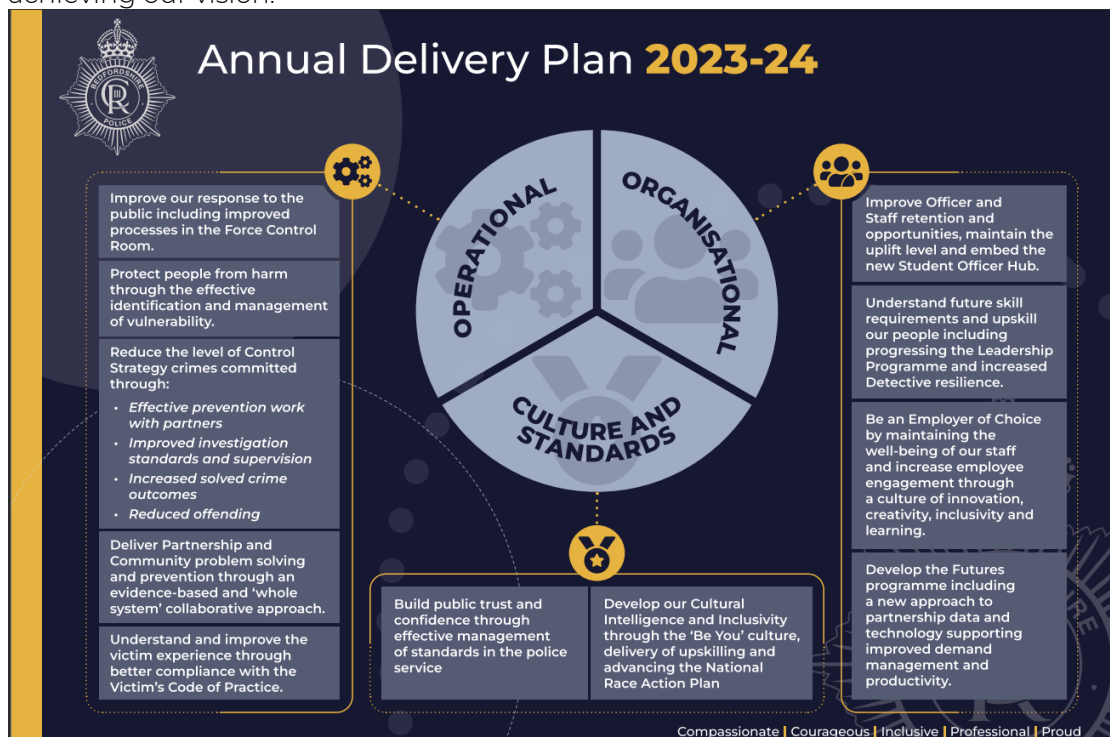
- If the level of funding over the Medium Term results in further budget reductions and in particular reductions to frontline police officers there may be a resultant deterioration in the services the force can provide to the public.
- If the Force is insufficiently sensitive to Equality, Diversity and Human Rights then it may fail to operate in a fair and ethical manner, and may fail to maintain community cohesion.

- If the Force fails to deliver training, accreditation, succession planning and continuous professional development it may fail to deliver effective and legitimate services and adequately support officers and staff.
- If the Force and partners fail to prevent radicalisation and deal with local threats from disorder and extremism it may fail to protect the public.
- If the Force fails to adequately recruit a diverse, inclusive, and representative workforce and manage the attrition of experienced people it may fail to retain appropriately skilled staff and fail to efficiently manage demand and deliver effective specialist services.
- If the force fails to comply with data protection legislation and General Data Protection Regulation requirements it may be at risk of data breaches resulting in harm to individuals, loss of public confidence, and sanctions from the Information Commissioners Office.

The risk register is regularly reviewed at senior officer level, the force Executive Board acts as the Strategic Risk Management Board, the Strategic Risk Register is also reviewed quarterly by the Joint Audit Committee.

The Commissioner holds the Chief Constable to account for the delivery of service through monthly Performance and Governance Board Meetings and regular one to one update meetings.

An Annual Delivery Plan is produced each year to provide more tactical annual delivery objectives to help take the Force towards delivering the Control Strategy and achieving our vision.



Bedfordshire Police's Control Strategy provides the basis for prioritising the Force's energy, resources, intelligence requirements, policing operations and improvement initiatives, to effectively deliver the Force's Purpose of protecting people and fighting crime together.

Informed by the Chief Constable's Strategic Plan and with input from the Command Team, functional leads, subject matter experts, Community Safety Partnership managers and their analysts we have then determined the priority areas as set out in the Control Strategy. The documents are entirely evidence based and reflect the challenges we face in Bedfordshire and the areas we want to improve.

The Control Strategy informs:

- How we deploy our resources
- How we task
- How we focus our partnership activity
- Where we focus our intelligence gathering
- Where we focus our training and knowledge building

The table below shows performance in key Control Strategy priorities and cross cutting themes, for the twelve months from 1st April 2023 to 31st March 2024, with an indication of the direction of travel.

Priority Themes High harm issues informing resourcing:	Intel Submissions		Recorded Crime					Solved Crime				
	12m to Mar 2024		12m to Mar 2024			12m to Jan 2024		12m to Mar 2024		12m to Jan 2024		
	Intel Submissio	Direction of Travel	Recorded Crimes	Crime Rate	Direction of Travel	Police Force	Rank	Solved Rate	Direction of Travel	Police Force	Rank	
Exploitation of children and adults												
Child Sexual Exploitation	863	🟡	43	0.06	🟡							
Child Sexual Abuse			1024	1.45	🟡			17.7%	🟢			
Sexual Grooming Offences (Offence Code 88A)			54	0.08	🟡	0.13	5	29.6%	🟢			
Human Trafficking and Modern Day Slavery (Code 106)	368	🟡	57	0.08	🟡	1.04	25	5.3%	🔴			
Rape and Domestic Abuse												
Rape			627	0.83	🟡	1.12	3	7.3%	🟢	7.3%	20	
Domestic Abuse*	236	🟡	7883	11.16	🟡	15.15	3	10.5%	🟢			
Domestic Abuse Repeats			2262	Rate: 28.7%	🟡							
Terrorism and Domestic Extremism												
Non DA MSV			356	0.50	🟢			24.4%	🔴			
Gangs/ Serious Youth Violence												
Serious Youth Violence			1941	2.743	🟡			14.3%	🟡			
Serious Knife Crime*	1193	🟡	533	0.840	🟡	0.70	32	14.2%	🔴			
Firesarms Crime*	633	🟡	35	0.135	🟡	0.10	33	16.8%	🔴			
Residential Burglary**												
Residential Burglary (April 2017 definition)	748	🟢	1573	5.872	🟡	5.71	22	8.3%	🔴	7.1%	6	
Burglary Dwelling (approx. old definition)			1220	4.554	🟡			9.8%	🔴			
Cross Cutting Themes Key enablers to crime to aid prevention and intervention:												
	12m to Mar 2024		12m to Mar 2024			12m to Jan 2024		12m to Mar 2024		12m to Jan 2024		
	Bedfordsh	ire	Direction of Travel	Recorded Crimes	Crime Rate	Direction of Travel	Police Force Average	Rank	Solved Rate	Direction of Travel	Police Force Average	Rank
Drug and Substance enabled crime and disorder												
Trafficking of Drugs	12306	🟡	433	0.638	🟢	0.75	24	58.6%	🟡	50.9%	12	
Possession of Drugs	4442	🟢	1286	1.821	🟡	1.88	28	86.2%	🟢	74.7%	11	
Crime and disorder related to individuals vulnerability												
Child Neglect (11A)	103	🟡	115	0.062	🟢	0.50	8	10.4%	🟢			
Cyber enabled crime and disorder												
Online Crime*	117	🟢	1732	2.538	🟢			10.3%	🟢			
Hate enabled crime and disorder												
Hate Crime	41	🟡	1163	1.647	🟡			13.0%	🟢			
Racially or Religiously Aggravated Offences			631	0.379	🟡	1.04	25	13.6%	🟢	17.5%	34	
Knife enabled crime and disorder												
Possession of Article with Blade or Point (10D)			233	0.330	🟡	0.44	14	44.2%	🟡			
Other Monitored Crimes												
	12m to Mar 2024		12m to Mar 2024			12m to Jan 2024		12m to Mar 2024		12m to Jan 2024		
	Bedfordsh	ire	Direction of Travel	Recorded Crimes	Crime Rate	Direction of Travel	Police Force Average	Rank	Solved Rate	Direction of Travel	Police Force Average	Rank
Business Robbery	150	🟢	36	0.051	🟡	0.11	17	25.0%	🔴	32.6%	20	
Personal Robbery			518	0.734	🟡	0.71	23	7.3%	🟢	11.1%	37	
Theft of Motor Vehicle	443	🟢	1653	2.341	🟡	2.52	37	3.6%	🟡	3.2%	34	
Theft from Motor Vehicle			2435	3.533	🟡	1.79	35	1.7%	🔴	6.2%	39	
Public Order	120	🟢	4510	6.387	🟡	8.21	14	3.5%	🟢	12.3%	30	
Violence Against the Person	345	🟡	18247	25.841	🟡	33.60	6	3.3%	🟡	11.1%	33	

6. SUMMARY AND CONCLUSION

The PCC and Chief Constable have a strong track record of effective financial management. The budgeting process is very thorough with rigorous challenge from both the Chief Constable's and the PCC and is very much linked to the Police and Crime Plan and the Force priorities.

The latest medium term financial plan, which covers the four-year period 2024/25 to 2027/28, identifies the need for further cash savings.

During the last three years the force has made great strides in recruiting additional police officers under the national Police Uplift programme. Bedfordshire was proud to hit its target to recruit to enhanced officer numbers of 1466 police officers and claim additional uplift grant for meeting this target.

Despite these financial challenges the PCC and Chief Constable look to continue their journey of improved service delivery as well as continue to raise the issue of funding for Bedfordshire Police not being commensurate with the level and complexity of demand that the force faces.

The financial outlook remains challenging but there is confidence that the PCC, Chief Constable and their respective leadership teams will continue to deliver strong and effective financial management in order to maintain an appropriate level of funding for essential operational services.

Further information

Additional information on revenue and capital expenditure is detailed in the notes to the accounts. Further information may be obtained from:

Chief Finance Officer, Bedfordshire Police, Police Headquarters, Woburn Road, Kempston, Bedford, MK43 9AX.

Any person interested also has a statutory right to inspect the accounts at Bedfordshire Police Headquarters before the completion of each annual audit as publicly advertised.

Statement of Responsibilities

The Chief Constable's Chief Finance Officer Responsibilities

The Chief Finance Officer is responsible for the preparation of the Chief Constable for Bedfordshire's statement of accounts in accordance with proper practices as set out in the CIPFA Code of Practice on Local Authority Accounting in the United Kingdom (the Code).

In preparing this statement of accounts the Chief Finance Officer has:

- selected suitable accounting policies and then applied them consistently;
- made judgements and estimates that were reasonable and prudent;
- complied with the Code;
- kept proper accounting records which are up to date;
- taken reasonable steps for the prevention and detection of fraud and other irregularities.

I certify that the Statement of Accounts gives a true and fair view of the financial position of the Chief Constable as at the 31 March 2024 and its income and expenditure for the year then ended.



Philip Wells
Chief Finance Officer to the Chief Constable & Police & Crime Commissioner
28 February 2025

The Chief Constable's Responsibilities

The Chief Constable is required:

- to make arrangements for the proper administration of its financial affairs and to secure that one of its officers (the Chief Finance Officer) has the responsibility for the administration of those affairs;
- to manage its affairs to secure economic, efficient and effective use of resources and safeguard its assets;
- to ensure that there is an adequate annual governance statement;
- to approve the statement of accounts.

I approve the Statement of Accounts



Trevor Rodenhurst
Chief Constable of Bedfordshire Police
28 February 2025

Annual Governance Statement

This Annual Governance Statement explains how the Police and Crime Commissioner (PCC) and Chief Constable for Bedfordshire Police have complied with their published corporate governance framework for the year ended 31 March 2024, including plans for the financial year 2024/25.

A glossary of terms is provided at the end of the Statement of Accounts.

SCOPE OF RESPONSIBILITY

Following the introduction of the Police Reform and Social Responsibility Act 2011 (the 2011 Act), the PCC and Chief Constable were established on 22 November 2012 as separate legal entities ('corporations sole') which means they are both entitled to own assets and employ staff. However, the 2011 Act gives PCCs responsibility for the totality of policing within their force area and requires them to hold their force Chief Constable to account for the operational delivery of policing.

Under the 2011 Act, the PCC is recipient of all funding, including government grant, precept and other sources of income related to policing and crime reduction, and all funding for a force must come via the PCC. How this money is allocated is a matter for the PCC in consultation with the Chief Constable, who provides professional advice and recommendations to the PCC. However, the PCC is ultimately accountable to the public for the management of the Police Fund.

The PCC is responsible for ensuring his business is conducted in accordance with the law and proper standards and, consequently, that public money is safeguarded, properly accounted for, and used economically, efficiently and effectively. Both the PCC and Chief Constable are required to, and have, appointed chief financial officers who each have a fiduciary duty to the local taxpayer for securing the efficient use of public funds. Under the Local Government Act 1999 the PCC makes arrangements to secure continuous improvement in the way his functions are exercised, having regard to a combination of economy, efficiency and effectiveness.

In discharging this overall responsibility, the PCC is responsible for putting in place proper arrangements for the governance of his affairs and facilitating the exercise of his functions, which includes ensuring a sound system of internal control is maintained and that arrangements are in place for the management of risk. In exercising this responsibility, the PCC places reliance on the Chief Constable to support the governance and risk management processes.

The Chief Constable is accountable to the law for the exercise of police powers and to the PCC for the delivery of efficient and effective policing, management of resources and expenditure by the police force. At all times the Chief Constable, his police officers and staff remain operationally independent in the service of the public. In discharging his overall responsibilities, the Chief Constable is responsible for establishing and maintaining appropriate risk management processes, governance arrangements and ensuring that there is a sound system of internal control which facilitates the effective exercise of these functions.

The Policing Protocol Order 2011 requires both the PCC and Chief Constable to abide by the seven principles of personal conduct set out in 'Standards in Public Life: First Report of the Committee on Standards in Public Life' (commonly known as the 'Nolan Principles'), i.e. 'Selflessness', 'Integrity', 'Objectivity', 'Accountability', 'Openness', 'Honesty' and 'Leadership'. The Nolan Principles are incorporated into the College of Policing 'Code of Ethics' that applies to every individual who works in policing, including the Chief Constable and OPCC.

https://www.college.police.uk/What-we-do/Ethics/Ethics-home/Documents/Code_of_Ethics.pdf

In addition, from an organisational perspective, the PCC and Chief Constable have approved and adopted a Code of Corporate Governance (the Code) which is consistent with the principles of the CIPFA / SOLACE guidance 'Delivering Good Governance in Local Government' <http://www.cipfa.org/policy-and-guidance/publications/d/delivering-good-governance-in-local-government-framework-2016-edition>

This Annual Governance Statement explains how the PCC and Chief Constable have complied with the Code and the requirements of Regulation 6 of the Accounts and Audit Regulations 2015 to conduct a review of the effectiveness of the system of internal control.

THE PURPOSE OF THE GOVERNANCE FRAMEWORK

Governance comprises the arrangements put in place to ensure that the intended outcomes for stakeholders are defined and achieved. The fundamental function of good governance in the public sector is to ensure that entities (i.e. the PCC and Chief Constable) achieve their intended outcomes whilst always acting in the public interest.

The governance framework comprises the systems and processes, and culture and values by which the PCC and Chief Constable discharge their responsibilities and through which the police service accounts to and engages with the community. It enables the PCC to monitor the achievement of his strategic objectives and to consider whether these objectives have led to the delivery of appropriate, cost-effective services, including achieving value for money.

The system of internal control is a significant part of that framework and is designed to manage risk to a reasonable and foreseeable level. It cannot eliminate all risk of failure to achieve policies, aims and objectives; it can therefore only provide reasonable and not absolute assurance of effectiveness. The system of internal control is based on an ongoing process designed to identify and prioritise the risks to the achievement of policies, aims and objectives, to evaluate the likelihood of those risks being realised and the impact should they be realised, and to manage them effectively, efficiently and economically.

THE GOVERNANCE FRAMEWORK

The key elements of the systems and processes that comprise the governance arrangements that have been put in place for the PCC and the Force include:

A. Behaving with integrity, demonstrating strong commitment to ethical values, and respecting the rule of law

The PCC and the Chief Constable have developed and approved a 'Joint Corporate Governance Framework' which clarifies the working relationship between the PCC, Chief Constable, and their respective staff. This includes the code of corporate governance, the scheme of delegation and financial regulations. The Framework is informed by the requirements of 'The Good Governance Standard for Public Services' and is consistent with the seven Nolan Principles of standards in public life.

The national police service Code of Ethics sets and defines the exemplary standards of behaviour for everyone who works in policing, placing an absolute duty on officers and staff. The Code applies to everyone in policing, officers, staff, volunteers, and contractors. It applies both on and off duty. It guides behaviour within the organisation as much as it informs how to deal with those outside.

Measures are in place to ensure that the PCC and employees of the Office of the PCC (OPCC) and the Force are not influenced by prejudice, bias, or conflicts of interest in dealing with different stakeholders. This includes the Anti-Fraud, Bribery and

Corruption Policy and guidance on the acceptance of gifts, loans, and hospitality. Notifications of disclosable interests and a register of gifts and hospitality are published on the PCC's and the force website.

The PCC and Chief Constable have transparent and accessible arrangements for dealing with complaints received from the public.

The Force has a Professional Standards Department (PSD) whose role is to uphold the ethical and professional standards of Bedfordshire Police by managing the application of police misconduct regulations, and the administration of complaints by members of the public against police officers and police staff below the rank of Chief Constable. Complaints against the Chief Constable are dealt with by the PCC. The independent Bedfordshire Police and Crime Panel (PCP) handles formal complaints made against the PCC.

The Deputy Chief Constable has regular monthly updates with PSD to consider conduct cases that are under investigation and the PCC conducts random dip sampling of cases.

Both the PCC and Chief Constable demonstrate respect for the rule of law and comply with relevant laws and regulations. Both have access to in-house legal advice to provide assurance of the same and guidance upon lawful decision making. The PCC is independent of Force management and operational decision-making, which is the responsibility of the Chief Constable. Established mechanisms ensure that legal and regulatory breaches and misuse of power are dealt with effectively. The PCC and Chief Constable (and all other individuals who work in policing) are subject to the College of Policing's Code of Ethics, which are consistent with the Nolan principles. The Chief Executive of the OPCC is also the designated statutory Monitoring Officer of the PCC's actions and decisions.

The PCC and Chief Constable create the conditions for all members of the OPCC and Force to be able to discharge their responsibilities in accordance with good practice. Guidance originating from the College of Policing and NPCC is disseminated through the OPCC and/or the Office of the Chief Constable. Similarly, best practice for PCCs is obtained via the Association of Police and Crime Commissioners (APCC), Association of Policing and Crime Chief Executives (APAC²E) and Police and Crime Commissioners Treasurers' Society (PACCTS) and is disseminated amongst the OPCC.

The Force employs a Force Vetting Manager and team within the Professional Standards Department to ensure compliance with relevant national vetting standards.

B. Ensuring openness and comprehensive stakeholder engagement

The PCC has a statutory responsibility to consult the Chief Constable and obtain the views of the community and victims of crime about the policing of the Force area and must have regard to their views as well as the priorities of responsible authorities within Bedfordshire and relevant government bodies before issuing a Police and Crime Plan.

The Police and Crime Plan must be published by the end of the financial year in which the PCC is elected and, in Bedfordshire, is reviewed as necessary and appropriate on an annual basis to ensure it remains relevant and fit for purpose. In so doing, the PCC is helping to ensure that local policing services address the priorities of local communities and that the Force is being held to account for the way services are delivered to the public.

Following his election in May 2021, the PCC published his Police and Crime Plan in autumn 2021. The PCC's Police and Crime Plan sets out his strategic policing and crime reduction priorities and key aims, and how these will be delivered. His Plan is

supported by the Force's Annual Delivery Plan, the OPCC's Strategic Delivery Plan and the Financial Strategy. The Police and Crime Plan has due regard to the Strategic Policing Requirement as issued by the Home Secretary and is developed in consultation with the Chief Constable, informed by the views of the local community, victims of crime and the priorities of other key stakeholders. A new PCC was elected in May 2024. The new PCC will launch his Police and Crime Plan in due course.

The independent Bedfordshire Police and Crime Panel meets regularly to review and scrutinise the decisions and actions of the PCC and his performance in delivering the objectives contained in his Police and Crime Plan. It also meets specifically to consider the PCC's proposed annual council tax precept, Police and Crime Plan, Annual Report, and any proposed appointment to the roles of Deputy PCC, where applicable, Chief Constable, OPCC Chief Executive and OPCC Chief Finance Officer.

Arrangements have been agreed and implemented for the PCC to hold the Chief Constable to account for Force performance and compliance with other requirements, including a schedule of formal Beating Crime and Delivery Boards (now replaced by the Performance & Governance Board and one to one holding to account meetings with the Chief which are then made publicly available) for which agendas and minutes are published on the PCC's website (as well as the meeting itself made available through social media), supplemented by regular private liaison meetings between the PCC and Chief Constable. The PCC's transparency of holding the Chief Constable to account has been enhanced through publication of the recording and minutes from the unrestricted section of the Performance & Governance Board and the sharing of the meeting itself on social media. These arrangements have been strengthened even further in 2023/24 by the PCC chairing these meetings.

The Framework of Corporate Governance defines the parameters for decision making, including delegations, financial regulations, and contract regulations. The PCC has published his policy statement on decision making. All formal and significant PCC decisions taken in accordance with this policy are published on his website and are presented to the Police and Crime Panel on a bi-monthly basis.

The PCC proactively publishes information to maintain openness and transparency with the public on this same website; in doing so he also meets his obligations under the Elected Local Policing Bodies (Specified Information) Order 2011 and, as a public authority, under the Freedom of Information Act 2000.

The previous PCC published his second Annual Report in July 2023, and his final one was presented to the Police & Crime Panel on 4th June 2024.. This gives an outline of progress made against the PCC's strategic objectives from his Police and Crime Plan.

Key information about the Force, including the Annual Delivery Plan is published on the Bedfordshire Police website. Information about neighbourhood policing, partnerships and sponsors, corporate events and public misconduct or special case hearings is also published, including details of upcoming hearings and how to attend. The site also allows for crimes and road traffic incidents to be reported, feedback to be given or complaints made.

The PCC and Chief Constable regularly attend local authority council meetings across Bedfordshire and provide formal briefings to constituency MPs on topical policing and crime issues at both a local and national level. The Chief Constable, and his management team, meet monthly with the local MPs to discuss local issues. In addition, the Police and Crime Panel acts as a two-way mechanism to enable local authority Panel representatives to inform the PCC of their local policing and crime matters of importance to their respective authorities, and to brief their authorities of the activities and initiatives of the PCC (and the Panel).

The PCC works with and part-funds local authority Community Safety Partnerships, Youth Offending Teams and Drug and Alcohol Teams across Bedfordshire to support

crime reduction and community safety activities in their local areas. Such activities are aligned to the PCC's strategic priorities and key aims, as set out in his Police and Crime Plan, and are funded from the PCC's Community Safety Fund. Through working in partnership, these activities help the PCC to deliver his strategic objectives and support partners in achieving their local priorities.

The PCC is Chair of the Bedfordshire Local Criminal Justice Board which meets quarterly to consider and discuss the performance of the local criminal justice system and any issues or initiatives being addressed individually and collectively by the criminal justice agencies. The Bedfordshire Deputy Chief Constable and Assistant Chief Constable represent the Force on the Board.

The Force has appropriate mechanisms for engaging with a variety of external organisational stakeholders. The Chief Constable attends regular meetings with the chief executives of all statutory partners sharing strategic information sharing and briefings for all key partners, including local authorities, blue light services, and health providers. In addition, senior police officers engage with the local authority commensurate to their geographic area, including their Community Safety Partnership.

Both the PCC and Chief Constable are members of the Strategic Alliances for the three force Collaboration of Bedfordshire, Cambridgeshire, and Hertfordshire as well as the seven force Eastern Region Alliance.

The OPCC and Chief Constable communication and engagement strategies explain how local people can interact with the PCC and the Chief Constable to ensure that their views inform decision making, accountability and future direction.

In so doing, the PCC is helping to ensure that local policing services address the priorities of local communities and that the Force is being held to account for the way services are delivered to the public and at what cost. Furthermore, the decisions and actions of the PCC are subject to regular review and scrutiny by the Police and Crime Panel.

The Chief Constable has a statutory duty to make arrangements for obtaining the views of persons within each neighbourhood about crime and disorder in that neighbourhood. Force engagement with the public takes place on many levels, from daily street contact and phone calls through to attendance at public meetings and formal surveys in relation to service priorities, levels and quality. Community Forums have been established across the force area and are active partnerships between the public, statutory and voluntary agency partners, and local policing teams. In addition, the Force has active social media outlets including Facebook and Twitter. The Beds Alert system also enables electronic public engagement.

C. Defining outcomes in terms of sustainable service and economic benefits

The PCC's Police and Crime Plan sets out his strategic policing and crime reduction priorities and key aims, and how these will be delivered. Following his election in May 2024, the new PCC will publish his Police and Crime Plan in due course.

The Chief Constable's most recent Annual Delivery Plan, published in April 2024, outlines the organisation's organisational themes and operational objectives, taking account of the PCC's Police and Crime Plan, the Government's national Beating Crime Plan and Strategic Policing Requirement, outcomes from HMICFRS inspections and other local and national factors. Progress against the Annual Delivery Plan is assessed through focussed evaluation measures, and reviewed via the Force Executive Board and Learning, Demand and Futures Board.

The Chief Constable has updated the Force Vision with a clear focus on culture, system productivity, people, performance edge and innovation.

The organisation is committed to the identification and consideration of collaboration opportunities with regards systems, processes, and resourcing to sustain service delivery and increase the capacity and resilience of the organisation without diminishing capability and access to specialist services. Major partnerships and consortia involving the Force and the PCC are governed by formal collaboration agreements under Section 22A of the Police Act 1996, or by Memoranda of Understanding, as appropriate. Joint collaboration oversight boards provide strategic oversight and an approval process for intended service outcomes to be delivered for collaboration activity. These collaboration boards comprise Chief Officers and the PCC from each Force area participating in the collaboration. There are also partnership arrangements in place with other agencies and stakeholders to manage vulnerability caused by the changing crime landscape, including MASHs.

The Medium-Term Financial Plan (MTFP) and Capital Programme ensure that planned activities to support the objectives of the PCC and Chief Constable are financially sustainable in the longer term. The MTFP, through the embedded Priority Based Budgeting (PBB) process identifies where savings and efficiencies can be achieved, and hence more resources directed to priority areas. Service delivery is reviewed within the Chief Constable's Force's Executive Board, which has been changed to include governance of all areas associated with: Change and Continuous Improvement Board, Performance Board and Learning, Demand and Futures Board.

Risk and business continuity matters are managed through a governance framework at a local and strategic level, to manage and mitigate threats to service delivery.

The Force and PCC have duties to consider the impact on equality of proposed changes to policies, procedures, and practices. Equality Impact Assessments are routinely undertaken by Bedfordshire Police for policies and change programmes to assess impact internally and externally for staff, stakeholders, and the public.

D. Determining the actions necessary to achieve the intended outcomes

The Force planning cycle has four phases, scan, plan do & review and incorporates strategic assessments of demand, assets and intelligence, the Annual Delivery Plan, the annual Force Management Statement, financial plans, and workforce plans. Priority activities, measures and intended outcomes are proposed and approved through the Chief Constable's Management Team (Force Executive), with regular updates provided to the PCC's Performance & Governance Board.

The Chief Constable maintains MTFPs, which form the basis of the annual budgets and provide a framework for the evaluation of future proposals. These are accompanied by mid-term workforce plans, managed by the People Portfolio.

Decision-making at all levels of the Force is undertaken within the framework of the National Decision Model, which has the Code of Ethics at its core. The National Decision Model was introduced to ensure a greater focus on delivering the mission of policing, acting in accordance with values, enhancing the use of discretion, reducing risk aversion, and supporting the appropriate allocation of limited policing resources as the demand for them increases. Both are now fully embedded in the Force, to ensure officers have the tools to act lawfully in their decision making and to enable them to use their full powers for the benefit of citizens, communities, and other stakeholders.

With regards to change programmes, Force change proposals are governed through the Change and Continuous Improvement Board, which co-ordinates and prioritises proposals, assessing them against the organisation's strategic objectives, capacity, and financial capability. These are overseen by the Force Executive Board. Each proposal is captured through an application, then if appropriate a business case. Projects and programmes requiring the support of a collaborated unit to deliver, are

governed through a joint Programme Management Office (PMO) with representation from all Forces.

The PCC and Chief Constable's joint system of internal financial control is based on a framework of regular management information, financial regulations, administrative procedures (including segregation of duties), management supervision, and a system of delegation and accountability. These financial controls are subject to review as part of the annual audit programme.

The Chief Constable produces a MTFP and a Capital Programme which are reviewed throughout the financial year alongside the OPCC's reserves to provide an effective framework for decision making. The MTFP and Capital Programme are closely aligned to the PCC's Police and Crime Plan and the Force Annual Delivery Plan. The PCC approves the MTFP and the Capital Programme as well as the annual budgets.

The Police and Crime Panel must review the PCC's proposed council tax precept and make recommendations to the PCC before he formally sets the annual budget in February of each year. Formal budget monitoring is undertaken regularly throughout the year. It is presented to the PCC's Performance & Governance Board as well as being reviewed regularly at the Force Executive Board.

E. Developing the entity's capacity, including the capability of its leadership and the individuals within it

The PCC and Chief Constable ensure that their statutory officers have the skills, resources and support necessary to perform effectively in their roles and that these roles are properly understood throughout the organisation. Specialist advice, in areas such as taxation, legal and treasury management, is sourced externally, as this is more practical and cost-effective. The PCC and Chief Constable use the annual staff appraisal process to focus individual employee contributions towards corporate objectives and measures, and to facilitate continuous professional development.

Chief Officers have clearly defined leadership roles and are responsible for implementing strategy and managing the delivery of services within their respective portfolios.

Officers and staff manage their performance and continuous development through the Performance Development Review framework. An annual assessment of competencies and objectives linked to Annual Delivery Plan outcomes is supported by regular conversations throughout the year and a requirement for officers and staff to undertake Continuous Professional Development, as applicable. The framework also allows for the management of unsatisfactory performance or attendance where it is identified. The Force has a stated Health and Wellbeing Strategy, along with a workforce plan focussed on recruitment, retention, and resilience.

The Force continues to build on its success towards building a workforce that is more representative of the communities it serves and has further invested resources into its attraction and engagement to sustain the developments in this area.

Chief Officers have promoted a learning environment climate focussed on continuous service improvement, recognising the importance of independent and peer review when needed. Integral to this is the identification of lessons learned, recommendations and identified areas for improvement through end of project / programme closure reports undertaken before transitioning to business as usual, results analysis, individual management reviews, serious case reviews and HMICFRS audit / inspection processes.

The previous PCC implemented a staffing structure within the OPCC to ensure it has the necessary capability and capacity to support delivery of his statutory functions, such as commissioning services for victims and witnesses.

The PCC reviews the workload and performance of his office via the internal OPCC Strategic Delivery Plan, which allows him to identify workload priorities and staffing capacity needs in accordance with the delivery of his strategic priorities. The PCC employs a part-time dedicated Chief Finance Officer for the OPCC.

The PCC is a member of the national Association of Police and Crime Commissioners (APCC). The Chief Constable and his fellow chief officers are members of the National Police Chiefs' Council (NPCC).

F. Managing risks and performance through robust internal control and strong public financial management

The Chief Constable, officers and staff all recognise that risk management is an integral part of their daily function, in operational, corporate and change environments. The management of risk is governed through the Force Executive Board. The Board is responsible for ensuring strong oversight of strategic risk management and business continuity processes including taking ownership of strategic risk issues; delegating actions to appropriate managers; and accepting strategic risk report updates and recommendations flowing from the Force Executive Board.

The PCC and Chief Constable monitor service delivery effectively via their respective performance regimes.

The PCC has a duty to hold the Chief Constable to account for the performance of the Force generally. The PCC has therefore implemented an effective scrutiny and oversight function. He holds a monthly Performance & Governance Board at which the Chief Constable, and his management team, are required to demonstrate that the Force is performing against the strategic priorities and key aims in the PCC's Police and Crime Plan, the Home Secretary's Strategic Policing Requirement, and the Force's own Plan. Similarly, the PCC meets monthly with the Chief Constable on a private, informal, basis to review and discuss more regularly the general performance of the Force against topical national, regional, and local issues.

The Force maintains an internal process to track implementation of actions from HMICFRS inspections, which is monitored through the Learning, Demand and Futures Board chaired by the Director of Strategic Services, with updates by exception to the Force Executive Board.

The Assistant Chief Constable chairs monthly Performance Boards, which report into the Force Executive Board, at which the Chief Constable reviews performance of the Force against plans. Gold Groups are set up to manage specific areas of vulnerability or performance as necessary, for example in response to a critical incident.

A Joint Audit Committee (JAC) operates in accordance with Chartered Institute of Public Finance and Accountancy (CIPFA) guidance and the Home Office Financial Management Code of Practice. The JAC's main role is to provide assurance to the PCC and Chief Constable that the corporate internal control and governance framework, including risk management, is operating effectively. It does this by providing an annual report to the PCC and Chief Constable. The JAC meets in public, with reports and minutes placed on the PCC's website.

Effective counter-fraud and anti-corruption arrangements are in place and are monitored, in the main, by the Professional Standards Department. The Anti-Fraud, Bribery and Corruption Policy is updated regularly and is considered and endorsed by the JAC before formal publication.

The Internal Audit Team provides assurance on the overall adequacy and effectiveness of the framework of governance, risk management and control.

The Force manages its information in accordance with the Data Protection Act 2018 and the General Data Protection Regulation, the Freedom of Information Act 2000

and the Code of Practice on the Management of Police Information and is overseen by the Information Management Governance Board chaired by the Deputy Chief Constable. The BCH Information Management Department (IMD) leads on information compliance for Bedfordshire Police, Cambridgeshire Constabulary and Hertfordshire Constabulary and ensures that appropriate policies and procedures are in place. The IMD is also responsible for providing guidance on lawful sharing of information with partners and completion of Data Protection Impact Assessments and maintains a library of Information Sharing Agreements. Information Asset Owners have been appointed to manage the risks to specific information types, supported by a network of data guardians. NCALT training packages on the Code of Practice on the Management of Police Information and the Government Security Classification policy are mandatory for all officers, staff and volunteers who have access to information and completion rates are monitored by the Information Governance Board.

The PCC and Chief Constable's joint system of internal financial control is based on a framework of regular management information, financial regulations, administrative procedures (including segregation of duties), management supervision, and a system of delegation and accountability.

The Chief Constable produces a MTFP and a Capital Programme which are regularly reviewed during each financial year and form the basis of the annual budgets, to provide an effective framework for decision making. Formal budget monitoring is undertaken regularly throughout the year, reviewed by the Force Executive, and presented to the PCC's Performance & Governance Board.

The Chief Internal Auditor reports jointly to the PCC's Chief Finance Officer and the Chief Constable's Assistant Chief Officer (the current postholder, who is also the CFO for the Chief Constable was confirmed in post by the Police and Crime Panel in February 2023. Prior to this the CFO from Bedfordshire Fire and Rescue Service held the post). The Chief Internal Auditor provides a regular update to the JAC and provides an independent opinion on the adequacy and effectiveness of the risk management, control and governance processes.

The financial management arrangements conform with the governance requirements of the CIPFA Statement on the Role of the Chief Financial Officer of the PCC and the Chief Financial Officer of the Chief Constable.

G. Implementing good practices in transparency, reporting and audit to deliver effective accountability

The PCC and the Chief Constable attempt to strike a balance between providing the right amount of information to satisfy transparency demands and enhance effective public scrutiny whilst not being too onerous to provide and for users to easily access and understand.

The PCC's decisions and actions are scrutinised by the Police and Crime Panel, which includes reviews of significant documentation produced by the OPCC for the benefit of the public. Decisions of significant public interest made by the PCC are published in accordance with a template that ensures they are easy to access and interrogate. Similarly, public reports are compiled in accordance with best practice and scrutinised by the JAC.

The PCC complies with the Elected Local Policing Bodies (Specified Information) Order 2011 and publishes required information on the OPCC website.

The PCC reports at least annually on performance, value for money, and the stewardship of resources to stakeholders in a timely and understandable way.

The PCC and Chief Constable maintain a process to assess the extent to which the organisation is applying the principles contained in the Joint Corporate Governance

Framework and publish the results of that assessment in the Annual Governance Statement, including an action plan for improvement and evidence to demonstrate good governance in action.

The PCC and Chief Constable ensure that the performance information that accompanies the financial statements is prepared on a consistent and timely basis and the statements allow for comparison with other similar entities.

The PCC and Chief Constable ensure that all accepted recommendations for corrective action made by external audit are acted upon.

The Internal Audit function has direct access to the PCC, Chief Constable and the JAC, and provides assurance about the organisation's governance arrangements. The JAC monitors progress with regards to timely implementation of agreed internal audit report actions.

Both the PCC and Force are subject to external independent scrutiny and review, through the external audit of their financial statements, systems, and management arrangements, and through the inspection of policing performance by HMICFRS. The resultant audit and inspection reports are published on the PCC's website.

HMICFRS is charged with independently assessing the effectiveness, efficiency and legitimacy of police forces and fire and rescue services, in the public interest. The PCC is required to publish a response to formal reports issued by HMICFRS. The Force engages fully with the cycle of Police Effectiveness, Efficiency and Legitimacy (PEEL) inspections, Joint Targeted Area Inspections and Thematic Inspections as required.

The PCC and Chief Constable make best use of peer challenge, reviews and inspections from regulatory bodies and professional partners (e.g. College of Policing) and implement agreed recommendations.

When working in partnership, the PCC and Chief Constable ensure that the arrangements for accountability are clear and that the need for wider public accountability has been recognised.

ARRANGEMENTS FOR REVIEW OF EFFECTIVENESS

The PCC and Chief Constable are responsible for reviewing the adequacy and effectiveness of the governance framework on at least an annual basis. This includes:

a) The Police and Crime Commissioner

The PCC has the following key statutory duties and powers to:

- produce and publish a Police and Crime Plan that sets out the PCC's policing and crime objectives;
- set the annual policing budget and council tax precept;
- secure the maintenance of an efficient and effective police force;
- hold the Chief Constable to account for the exercise of their functions and of those personnel under their direction and control;
- have regard to the relevant priorities of, and act in co-operation with, responsible authorities in exercising their crime and disorder reduction responsibilities, including the making of related grants to any person;
- make arrangements with criminal justice bodies to provide an efficient and effective criminal justice system for the Force area;
- commission victims' services;
- power to take on the responsibility for the governance of fire and rescue services within the Force area; and

- produce and publish an annual report.

The following key governance activities took place during 2023/24 and demonstrate how the PCC has discharged these powers and duties during that year:

- The PCC allocated Community Safety Funds to help improve community safety and crime prevention across Bedfordshire. These were reported to the Police and Crime Panel.
- The PCC published the 2022/23 Annual Report in July 2024, giving an outline of progress made against the PCC's strategic objectives from his Police and Crime Plan. The 2023/24 Annual Report will be reported to the Police and Crime Panel on 4th June 2024.
- During the autumn of 2023 the PCC worked closely with the Chief Constable to update the MTFP (2024/25 to 2027/28). The PCC presented the budget and council tax proposals for 2024/25 to the Police and Crime Panel on 6th February 2024. The Panel voted to accept the £13 increase in Band D council tax.
- The PCC is actively engaged in the oversight and scrutiny of key collaboration activities (e.g. BCH and seven Force Alliances, Chiltern Transport Consortium, and the National Police Air Service).
- Monthly Performance & Governance Board, supplemented by regular private and informal liaison meetings between the PCC and Chief Constable, to enable the PCC to hold the Chief Constable to account.

b) The Force

The Force Executive Board meets monthly to govern and monitor Force strategy, policies, performance, and progress against the annual delivery plan. The Joint Chief Officers Board (for the BCH Alliance) meets monthly to provide similar governance for areas of collaboration.

Key discussions during the year include review of the MTFP, Capital Programme and the PCC reserves as part of the annual budget cycle. The financial plans were considered several times, and the associated decisions facilitated the formal approval of the Revenue Budget and Capital Programme 2024/25 by the PCC in early 2024. As part of the annual budget process the Priority Based Budgeting outcomes were also considered.

The PCC, Chief Constable and Deputy Chief Constable attend regular seven force collaboration boards for oversight of regional collaboration such as PEQF and the Emergency Services Network, as well as the operational elements of ERSOU.

The Force's Strategic Services and Improvement Department continues to draw together corporate and strategic elements of the organisation. The over-arching function is to provide a central point of co-ordination, governance, strategy, policy, and guidance development, change delivery, and the provision of internal evaluation of delivery including the identification of opportunities for continuous improvement.

c) The Joint Independent Audit Committee

Quarterly meetings of the JAC consider external audit and internal audit plans; updates of the Force and OPCC strategic risk registers; and written briefings on other assurance issues from the OPCC and Force. JAC members can attend Force working groups as observers to gain a greater understanding of current governance, operational and risk activities and to assist their judgment of the adequacy of the overall Joint Corporate Governance Framework. In addition, the JAC Members have at least one development day per annum to allow them to be provided with more detail on various aspects of the Force and OPCC.

d) Internal audit

The annual report of the Chief Internal Auditor for 2023/24 contained the following assurance statement on the overall adequacy and effectiveness of the internal control environment for both the PCC and Chief Constable:

The organisation has an adequate and effective framework for risk management, governance and internal control.

However, our work has identified further enhancements to the framework of risk management, governance and internal control to ensure that it remains adequate and effective.

e) External audit

On 24th March 2023 DBO, the external auditor, issued an unqualified audit opinion in respect of the 2020/21 statement of accounts to both the PCC and the Chief Constable.

Despite the 2021/22 and 2022/23 statement of accounts being published by the due date no date has been set for the audit of these accounts by our external auditors for this period who were DBO. They wrote to Jagtar Singh in his capacity as the Chair of the Audit Committee explaining the reasons for delay. As a result, no audit letter or opinion has been given provided by the external auditors. This delay is beyond the control of Bedfordshire Police, this means that the opening balances contained within these statement of accounts have not been externally verified.

In February 2024, the government launched a consultation on the best way to clear the backlog in local authority audit, which outlined measures to “reset” the system through a backstop date of 30 September 2024 to publish accounts for all outstanding years up to and including 2022/23. If accounts are not finalised by this deadline disclaimers of opinion will be issued. This means that the auditor does not provide an opinion and this is the position that the PCC and Chief Constable are both expecting.

BDO have been replaced by KPMG from the commencement of the 2023/24 financial year onward and expect to provide an audit opinion by the final accounts publication deadline of 31 December 2024. However this opinion is expected to be a qualified opinion meaning that the audit report will state that the financial statements give a true and fair view ‘except for’ the effects of any adjustments that might have been found necessary, had a limitation of scope not affected the evidence available. This limitation is not so significant that a disclaimer of opinion is required but is brought about by the disclaimer of opinion given for the accounts of the prior year.

The 2023/24 unaudited financial statements will be signed by the PCC’s CFO and Chief Constable’s CFO on 14 June 2024 and published on that same day.

f) Her Majesty’s Inspectorate of Constabulary and Fire and Rescue Services (HMICFRS)

In 2018/19, HMICFRS adopted an integrated approach to the PEEL inspection programme, combining the effectiveness, efficiency, and legitimacy strands into a single inspection. From 2021 forces receive one of five graded judgements in their inspected service areas: outstanding; good; adequate; requires improvement; inadequate. The report from the most recent (autumn 2021) PEEL inspection of Bedfordshire, published in April 2022, gave graded judgements in eight aspects:

- **Outstanding** in Managing offenders and suspects.
- **Good** in Engaging with and treating the public with fairness and respect.
- **Good** in preventing crime and anti-social behaviour.

- **Good** in building, supporting and protecting the workforce.
- **Good** in strategic planning, organisational management and value for money.
- **Adequate** in Protecting vulnerable people.
- **Requires improvement** in Responding to the public.
- **Requires improvement** in investigating crime.

Disrupting serious and organised crime was subject to a separate PEEL report (published May 2023) and received a grading of 'good'. Of all the other police forces to have had their 2021/22 PEEL inspection reports published by May 2023, Bedfordshire remains in the upper quartile.

Preparations are underway for the next PEEL inspection of Bedfordshire, with the main inspection visit scheduled for September 2024.

Areas for improvement from inspection activities are managed through a dedicated tracker, governed by the Force's Learning, Demand and Futures Board, chaired by the Director of Strategic Services.

A monthly task and finish group chaired by the DCC and attended by all the key business area leads will continue from late summer 2023 to provide oversight and guidance to the next phase of the PEEL assessment programme (2023/24).

The full list of HMICFRS publications is shown on the HMICFRS website.

The Force submitted its 2024 Force Management Statement to HMICFRS in May 2024. This comprised; a strategic assessment of current and future demands; a strategic assessment of workforce and non-workforce assets; and force and collaboration plans to manage and mitigate future demand. The Force continues to be heavily engaged in national co-ordination of the Force Management Statement process.

g) Risk management and business continuity

The strategic risk registers for the PCC and Chief Constable are updated quarterly and reviewed by the Joint Audit Committee. The PCC risk register is reviewed at its Senior Leadership Team meeting and the Force risk register is reviewed by the Force Executive Board.

h) Health and Safety and Environmental Management

Bedfordshire Police have a Health & Safety Board that meet on a quarterly basis. The purpose of the Board is to initiate, promote, maintain, and review measures of health and safety of all those that work for, or engage with, Bedfordshire Police. The Bedfordshire Health & Safety Board feeds into the BCH Health & Safety Board.

The Bedfordshire Deputy Chief Constable chairs a BCH Health and Safety Board to ensure that appropriate measures are in place and all officers and staff have been required to complete mandatory training on specific areas of Health and Safety. The Force has allocated co-ordination of Health and Safety issues for Bedfordshire to the Director of the Strategic Services and Improvement Department. The Bedfordshire Strategic Risk Register contains a specific Health and Safety strategy risk to ensure ongoing monitoring or strategic Health and Safety issues.

i) Ethics and Integrity

A protocol between the PCC and Chief Constable provides the PCC with overview and scrutiny of complaints handling by the Force.

All complaints against the Chief Constable are reported to the PCC's Performance & Governance Board and any complaints against the PCC are reported to the Police and Crime Panel.

The Chief Constable continues to promote the fundamental importance of Bedfordshire Police officers and staff employing the highest professional standards, principles which are embodied and enforced through the Code of Ethics. All new Officers and staff receive training on the Code of Ethics as part of their induction.

j) Bedfordshire Police and Crime Panel

The independent Police and Crime Panel met seven times in 2023/24. Key activities undertaken by the Panel during the year included reviewing and scrutinising the PCC's Annual Report for the 2022/23 year with the final one presented on 4th June 2024; scrutiny and consideration of the PCC's 2024/25 budget and council tax precept proposals. Over and above these specific activities, the Panel continued to receive and consider regular reports on the delivery of the Police and Crime Plan strategic priorities and key aims, including the contribution made by other partner agencies, and on matters of topical interest to the Panel.

k) Collaboration and partnership working

The Strategic Alliance Summit oversees and scrutinises the work of the existing collaborative functions (i.e. Joint Protective Services, Organisational Support and Operational Support) as well as an overview of the national developments and their impact on Bedfordshire, Cambridgeshire & Hertfordshire.

With Bedfordshire having host force status for Joint Protective Services the PCC's Chief Executive attend the JPS Governance Boards (chaired by the Bedfordshire DCC) on his behalf.

The Eastern Region Special Operations Unit (ERSOU), hosted by Bedfordshire, brings together the current regional organised crime units under one structure. It is operationally aligned with the eastern Region Counter Terrorism Investigation Unit (CTIU). A joint ACC, who reports directly to the Deputy Chief Constable of Bedfordshire, exercises overall command of the regional crime and counter terrorism functions. The joint ACC also represents serious organised crime at the Eastern Region Governance Board and nationally with the National Crime Agency and other key stakeholders

SIGNIFICANT GOVERNANCE ISSUES

It should be noted that significant operational issues continuing to face the organisation are not necessarily a result of weaknesses within the internal control and governance framework.

- The Financial Statements for 2021/22 and 2022/23 have been published as required as draft statements, however to date there is no timetable for the auditing of these Statements from the External Auditors.
- The PCC continues to receive Special Grants for Operations Boson and Costello. However, these are time limited grants and whilst continuation funding has been agreed for 2024/25 and is expected in 2025/26. Bedfordshire Police continues to be, inappropriately funded to tackle the disproportionate demands it faces in relation to gun, gang and knife crime and organised crime groups. These grants are likely to reduce over the forthcoming years placing additional funding pressures on the Force.
- Out of the 7 Bedfordshire only internal audit reports issued during the year 6 received substantial assurance and at the time of writing the other one was still to be agreed. Of the 5 collaborated audits that took place, 1 received

substantial assurance and 3 received reasonable assurance. The final audit for 7F Procurement was still in draft.

- Despite the improved funding position for Bedfordshire there remains a need, based upon the fact that the complexity and level of demand in Bedfordshire is not commensurate with the way in which policing is funded for both the PCC and Chief Constable to continue with their focus on continue to enhance its understanding of demand, its impact on performance and its ability to fund priority activities over the coming year. There is also a need to ensure that short term specific funding is put on a long-term footing through a revised national funding formula.
- Significant improvement has been made in relation to responding to the public via the Control Room. The Force will now focus on performance by further enhancing its response to the public and improving its solved crime rate.



Trevor Rodenhurst
Chief Constable of Bedfordshire Police
28 February 2025



Philip Wells
Chief Finance Officer
28 February 2025

Comprehensive Income and Expenditure Statement

This statement recognised the financial resources consumed at the request of the Chief Constable in exercising day-to-day direction and control of the police force for the financial year, presented using accounting standards rather than amounts being funded from taxation.

The Comprehensive Income & Expenditure Statement includes the intra-group transfer of funding from the PCC to the Chief Constable to cover resources consumed; the resulting balance of Total Comprehensive Income & Expenditure reflects the movement in employees' liability during the year.

2022/23				2023/24			Notes
Gross Expenditure	Gross Income	Net Expenditure		Gross Expenditure	Gross Income	Net Expenditure	
£'000	£'000	£'000		£'000	£'000	£'000	
88,361	-337	88,024	Policing	88,381	-341	88,040	
57,552	-2,771	54,781	Collaborated Units	63,724	-3,274	60,450	
59,153	-10,437	48,716	Corporate & Support Services	37,174	-10,919	26,255	
205,066	-13,545	191,521	Cost of Services	189,279	-14,534	174,745	
		0	Other Operating Income & Expenditure			0	
		37,771	Financing & Investment Income & Expenditure			43,438	8
		-180,728	PCC Funding for Financial Resources Consumed			-193,784	3
		48,564	(Surplus) or Deficit on Provision of Services			24,399	
		-532,964	Re-measurements of the net defined benefit liability			-21,064	
		-532,964	Other Comprehensive Income & Expenditure			-21,064	
		-484,400	Total Comprehensive Income & Expenditure			3,335	

Movement in Reserves Statement

This statement shows the movement in the 2022/23 and 2023/24 financial years on the reserves held by the Chief Constable. The only transactions shown are those that relate to the Pensions Reserve and the Accumulated Absences Reserve (reflecting movements relating to staff and officers under the direction and control of the Chief Constable). All other reserves are held by the Commissioner.

	Total Usable Reserves (Police Fund)	Unusable Reserves	Total Reserves
	£'000	£'000	£'000
Balance as at 31st March 2022	0	1,438,909	1,438,909
<u>Movement In Reserves during 2022/23</u>			
(Surplus) or deficit on provision of services	48,564	0	48,564
Other Comprehensive Income & Expenditure	0	-532,964	-532,964
Total Comprehensive Income & Expenditure	48,564	-532,964	-484,400
Adjustments between accounting basis & funding basis under regulations (note 9)	-48,564	48,564	0
(Increase) / Decrease in Year	0	-484,400	-484,400
Balance as at 31st March 2023	0	954,509	954,509
<u>Movement In Reserves during 2023/24</u>			
(Surplus) or deficit on provision of services	24,399	0	24,399
Other Comprehensive Income & Expenditure	0	-21,064	-21,064
Total Comprehensive Income & Expenditure	24,399	-21,064	3,335
Adjustments between accounting basis & funding basis under regulations (note 9)	-24,399	24,399	0
(Increase) / Decrease in Year	0	3,335	3,335
Balance as at 31 st March 2024	0	957,844	957,844

Balance Sheet

As at 31 st March 2023		As at 31 st March 2024	Note
£'000		£'000	
0	Non-Current Assets	0	
68	Inventories	64	
10,030	Short Term Debtors & Payments in Advance	11,835	13
16,770	Intra –group Debtors	17,113	13
26,868	Current Assets	29,012	
-33,189	Short Term Creditors	-37,060	14
-33,189	Current Liabilities	-37,060	
-947,375	Liability Relating to Defined Benefit Pension Schemes	-949,096	25
-813	Provisions	-700	
0	Long Term Creditors	0	
-948,188	Non-Current Liabilities	-949,796	
-954,509	Net Assets	-957,844	
954,509	Unusable Reserves	957,844	15
954,509	Total Equity	957,844	

The balance sheet sets out the assets, liabilities and reserves at the year end. As previously mentioned the Chief Constable does not own any non-current assets these all remain under the direction and control of the PCC for Bedfordshire and are therefore shown in the PCC for Bedfordshire's Group accounts. However the Chief Constable is deemed to hold the employment liabilities associated with the employees under their direction and control which are matched by a negative unusable reserve. In addition working capital balances are recognised relating to expenditure consumed and income generated under the control of the Chief Constable, these are matched by an Intra-group Debtor to reflect the amount due from the Commissioner in order for the Chief Constable to meet these overall liabilities.



Philip Wells
Chief Finance Officer to the Chief Constable
28 February 2025

Cash Flow Statement

As at 31 st March 2023		As at 31 st March 2024	Note
£'000		£'000	
-48,564	Net surplus or (deficit) on the provision of services	-24,399	
48,564	Adjust net surplus or deficit on the provision of services for noncash movements	24,399	16
0	Adjust for items included in the net surplus or deficit on the provision of services that are investing and financing activities	0	
0	Net cash flows from Operating Activities	0	
0	Investing Activities	0	
0	Financing Activities	0	
0	Net increase or (decrease) in cash and cash equivalents	0	
0	Cash and cash equivalents at the beginning of the reporting period	0	
0	Cash and cash equivalents at the end of the reporting period	0	

This statement reflects that all cash balances are held by the Police & Crime Commissioner.

Notes to the Accounts

Note 1: Accounting Policies

A. General

The Statement of Accounts summarises the transactions for the 2023/24 financial year and the position of the Chief Constable as at 31st March 2024. It has been prepared in accordance with the Code of Practice on Local Authority Accounting in the United Kingdom for 2023/24, supported by International Financial Reporting Standards (IFRS) which is recognised by statute as representing proper accounting practice.

The accounting convention adopted is historical cost, modified by the revaluation of certain categories of non-current assets.

The Chief Constable's Accounting Policies are disclosed separately in their Statement of Accounts.

The accounts are prepared on a going concern basis; that is, on the assumption that the functions of the PCC/CC will continue in operational existence for the foreseeable future from the date that the accounts are authorised for issue. In carrying out a Going Concern assessment the PCC has taken into account its statutory duty to allocate assets and funds to the Chief Constable. The PCC/CC has considered known and expected government funding and determined that it has sufficient liquidity from its ability to access short term investments and sufficient general fund balances and reserves to continue to deliver services. As a result, the PCC/CC are satisfied that they can prepare their accounts on a going concern basis. The PCC/CC's detailed assessment has considered the following:

- We have a history of strong and effective financial management;
- We have carried out a self-assessment against the new CIPFA Financial Management Code;
- We have once again managed revenue and capital resources within budget during 2023/24 and have done so during several difficult financial years.
- We have an efficient and effective internal audit service that reports jointly to the PCC CFO and the Force Assistant Chief Officer. Quarterly update reports are presented to the Joint Internal Audit Committee. The report of the Chief Internal Auditors reported that the organisation has an adequate and effective framework for risk management, governance and internal control.
- We produce and publish a detailed annual financial strategy, capital strategy, reserves strategy and a treasury management strategy statement;
- We produce a 4 year medium term financial plan as well as a 4 year capital plan;
- We have an embedded Priority Based Budgeting model that allows service to move with the funding envelope;
- The medium term financial plan is fully balanced in 2024/25 but has identified shortfalls in later years. Work is ongoing to update the draft budget for 2025/26 and medium term financial plan and regular updates will be provided to both the Force Executive and PCC in coming months;
- We are maintaining our general reserve to 3% of the net revenue expenditure and we have maintained a budget reserve to assist with smoothing funding deficits over the medium term;
- The CFO publishes a Section 25 report (Local Government Act 2003) analysis within the annual budget report highlighting all key issues and concerns;
- The Annual Governance Statement for 2023/24 has not identified any significant areas weakness in governance or internal control that require immediate attention during 2023/24

Based on all of the above, the PCC does not consider that there is a material uncertainty in respect of its ability to continue as a going concern for the period to 30 December 2025.

B. Cost Recognition and Intra-Group Adjustment

All contracts are held in the name of the PCC for Bedfordshire and the PCC pays for all expenditure including salaries of police officers, PCSOs and police staff. There is no transfer of cash between the PCC and Chief Constable, the Chief Constable does not have a bank account into which monies can be received or paid from. Costs are recognised in the Chief Constable's accounts to reflect the resources consumed and generated in the direction and control of day-to-day policing at the request of the Chief Constable.

In addition the Chief Constable's accounts reflect the employment and post-employment liabilities in accordance with IAS19 which states that liabilities relating to these benefits should follow the cost of employment. The Chief Constable's Total Comprehensive Income and Expenditure reflects the movement in the Chief Constable's unusable reserves as all other net expenditure is met by a transfer of resources from the PCC and no usable reserves are held by the Chief Constable.

C. Debtors and Creditors

The Chief Constable for Bedfordshire's accounts are maintained on the basis of receipts and payments converted at the year end to income and expenditure by bringing creditors and debtors of material significance into account. Where consumption of goods and services needs to be recognised in the relevant financial year, but cash has not been paid a creditor or debtor for the relevant amount, is recorded in the group Balance Sheet.

The following exceptions are applied consistently and their effect is not material on the accounts from one year to the next.

- (i) Overtime paid to Police staff which has been claimed after the end of the financial year is not accrued;
- (ii) Utility charges and similar quarterly payments are charged so that four payments appear in each year's accounts. Payments are not apportioned between financial years. For monthly accounts, twelve payments are charged during the year;
- (iii) Travel expenses claimed after the end of the financial year have not been accrued.

As all payments are made by the PCC on the Chief Constable's behalf, the creditors and debtors recognised on the Chief Constable's balance sheet will need to be financed by the PCC, therefore an intra-group debtor is recognised in the Chief Constable's balance sheet and an intra-group creditor on the PCC's balance sheet to show that the liability ultimately rests with the PCC.

D. Pensions

As part of the terms and conditions of employment the Group offers retirement benefits for Police Officers and Staff. Both Schemes provide members with defined benefits related to pay and service.

(i) Police Officers – Police Pension Scheme

This Scheme is 'unfunded'. The charge to the Accounts represents the applicable IAS19 charges as determined by the Actuary. The Code of Practice requires separate statements to be produced which are shown at Note 25.

(ii) Other Employees – Local Government Pension Scheme (LGPS)

Subject to certain qualifying criteria, police staff are eligible to join the Local Government Pension Scheme administered by Bedford Borough Council. The Scheme is 'funded' and the applicable IAS19 charges included in the accounts are determined by two separate Actuarial Reports for the Chief Constable and for the Commissioner's employees.

The figures included within the Accounts are based on the IAS19 requirements, that an organisation should account for retirement benefits when it is committed to give them, even if the actual giving will be many years in the future. Injury benefits paid under police pension schemes are disclosed separately. These payments are unfunded and are paid directly by the group. Injury awards are subject

to the same treatment as police pension schemes, with the movement on the liability being attributable to any change in interest cost and actuarial gains / losses.

This obligation to pay pensions benefits in the future is recognised as a liability in the Chief Constable for Bedfordshire's balance sheet. In the Comprehensive Income and Expenditure Statement, transactions are recorded that indicate the change over the year in the pension liability. The transactions are not cash-based but are instead actuarially calculated amounts that reflect more accurately the true changes in the scheme's long-term liabilities. The following items should be noted:

- The attributable defined benefit liabilities of each scheme should be measured on an actuarial basis using the projected unit credit method – i.e. an assessment of the future payments that will be made in relation to retirement benefits earned to date, based on assumptions about mortality rate, employee turnover rates and projections of projected earnings for current employees.
- Liabilities for the payment of future injury benefits are based on current and projected injury statistics (including an element for serving police officers) as determined by the actuary.
- Liabilities are discounted to their value at current prices using a discount rate based on the indicative rate of return on high quality corporate bonds determined by the actuaries.
- In the case of the local government scheme, which is a funded scheme, the scheme assets are deducted in determining the overall liability.
- Quoted securities held as scheme assets are valued at their bid value at the latest available date.

The change in the net pension liability is analysed into the following components:

- The current service cost (the increase in liabilities as a result of years of service earned this year) is debited to the Comprehensive Income and Expenditure Statement as part of Corporate Costs.
- The past service cost (the increase in liabilities arising from current year decisions whose effect relates to years of service earned in earlier years) is debited to the Comprehensive Income and Expenditure Statement as part of Corporate Costs.
- Interest cost (the expected increase in the present value of liabilities during the year as they move one year closer to being paid) is debited to the Financing and Investment Income and Expenditure line in the Comprehensive Income and Expenditure Statement.
- Interest Income on assets (the annual investment return on the fund assets attributable to the group) is credited to the Financing and Investment Income and Expenditure line in the Comprehensive Income and Expenditure Statement.
- Gains / losses on settlements (the result of actions to relieve the group of liabilities or events that reduce the expected long term return) are debited / credited to the Comprehensive Income and Expenditure Statement as part of Corporate Costs.
- Re-measurements of the net defined benefit liability (asset) are debited / credited to the appropriate reserve. This includes an amount for actuarial gains / losses and estimated returns on plan assets which arise because events have not coincided with assumptions made at the last actuarial valuation or because the actuaries have updated their assumptions.
- The employer's contributions made in the year are not accounted for as an expense.

The above balances and transactions are included in the accounts to provide a more informative picture of the Chief Constable's pension schemes and this liability is matched by an unusable reserve.

E. Officers' Emoluments

Officers' Emoluments are disclosed in Note 17 to the accounts on a cash basis of gross pay as notified in the P60s to the Inland Revenue and including taxable benefits within the P11Ds. The figures

contained within the Comprehensive Income and Expenditure Statement, however, are prepared on an accruals basis in accordance with proper accounting practices.

F. VAT

VAT is included in the accounts of the Chief Constable for Bedfordshire, only to the extent that it is not recoverable. VAT receivable is excluded from income.

G. Leases

Rentals paid under operating leases are charged to the Comprehensive Income and Expenditure Statement as an expense of the services benefiting from use of the leased property, plant or equipment. Charges are made on a straight line basis over the life of the lease, even if this does not match the pattern of payments (i.e. there is a rent free period at the commencement of the lease).

Leases are classified as finance leases where the terms of the lease transfer substantially all the risks and rewards of ownership from the lessor to the lessee. The Chief Constable has assessed its leases and determined that all leases are to be treated as operating leases during 2023/24.

The Chief Constable has no leases where it is the lessor.

H. Benefits Payable during Employment

Short-term employee benefits such as wages and salaries, paid annual leave and time owed for current employees are recognised as an expense in the year in which employees render service. An accrual is made against the services in the Surplus / Deficit on Provision of Services for the cost of leave earned by employees but not taken before the year end. The accumulated cost is carried as a liability on the Chief Constable's balance sheet and reversed out of the General Fund Balance by a credit to the Accumulating Compensated Absences Adjustment Account in the Movement in Reserves Statement. The accumulated cost is carried entirely as a liability on the Chief Constable's balance sheet, due to the low number of employees employed by the PCC there is no accrual made for the cost of leave earned but not taken in relation to the PCC's employees, this is judged not to be material and this judgement is kept under review.

I. Termination Benefits

Termination benefits are amounts payable as a result of a decision to terminate an officer's employment before the normal retirement date or an officer's decision to accept voluntary redundancy and are charged on an accruals basis to the relevant service line in the Comprehensive Income and Expenditure Statement once a valid expectation of redundancy is created.

J. Events after the Reporting Period

Events after the reporting period are those events, both favourable and unfavourable, that occur between the end of the reporting period and the date in which the Statement of Accounts is authorised for issue. Two types of events can be identified:

- Those that provide evidence of conditions that existed at the end of the reporting period. The Statement of Accounts is adjusted to reflect such events.
- Those that indicate conditions that arose after the reporting period. The Statement of Accounts is not adjusted to reflect such events, but where a category of events would have a material effect disclosure is made in the notes to the accounts of the nature of the events and their estimated financial effect.

Events taking place after the date of authorisation for issue are not reflected in the Statement of Accounts.

K. Exceptional Items

When items of income and expense are material, their nature and amount is disclosed separately, either on the face of the Comprehensive Income and Expenditure Statement or in the notes to the accounts, depending on how significant the items are to an understanding of the Chief Constable for

Bedfordshire's financial performance.

L. Joint Operations

Joint operations are activities undertaken by the Chief Constable for Bedfordshire in conjunction with other third parties that involve the joint use of assets and resources, rather than the establishment of a separate entity. The Comprehensive Income & Expenditure Statement is debited with the expenditure it incurs from the activity of the operation. As the PCC receives all funding, any grant receivable from the structure of the arrangement will be credited to the Comprehensive Income and Expenditure Statement of the PCC. The PCC then credits the Chief Constable with an equivalent amount through the intra-group funding. Assets purchased by Joint Operations are shared between the parties and each recognises only their own share on their balance sheet.

M. Overheads and Support Services

The costs of overheads and support services are shown in the areas they are budgeted for and managed within the organisation. The Expenditure and Funding Analysis and the Comprehensive Income & Expenditure Statement reflect the headings to which the organisation reports expenditure to the senior decision makers within the organisation.

N. Provisions, Contingent Liabilities and Contingent Assets

Provisions are made when an event has taken place that gives the Chief Constable for Bedfordshire a legal or constructive obligation that probably requires settlement by a transfer of economic benefits or service potential, and a reliable estimate can be made of the amount of the obligation.

Provisions are charged as an expense to the appropriate service line in the Comprehensive Income and Expenditure Statement in the year that the Chief Constable for Bedfordshire becomes aware of the obligation, and measured at the best estimate at the balance sheet date of the expenditure required to settle the obligation, taking into account relevant risks and uncertainties.

Estimated settlements are reviewed at the end of each financial year. If it becomes less than probable that a transfer of economic benefits will be required (or a lower settlement than anticipated is made), the provision is reversed and credited back to the relevant service.

A contingent liability arises where an event has taken place that gives the Chief Constable a possible obligation, the existence of which will only be confirmed by the occurrence of an uncertain future event not wholly within the organisations control. Contingent liabilities also arise in circumstances where a provision would otherwise be made but the recognition criterion above is not met. A contingent liability is not recognised on the balance sheet but disclosed in the notes to the accounts.

O. Prior Period Adjustments

Prior period adjustments may arise as a result of a change in accounting policies or to correct a material error.

Changes in accounting policies are only made when required by proper accounting practices or the change provides more reliable or relevant information about the effect of transactions, other events and conditions on the PCC for Bedfordshire's financial position or performance. Where a change is made it is applied retrospectively by adjusting opening balances and comparative amounts for the prior period as if the new policy had always applied.

Changes in accounting estimates are applied prospectively, i.e. in the current and future year affected by the change.

Where material errors are discovered in prior period figures they are corrected retrospectively by amending opening balances and comparative amounts for the prior period.

P. Revenue Recognition

Specific grants & contributions which result in the Commissioner providing additional resources to the Chief Constable in the budget are included in the Commissioner's Comprehensive Income and

Expenditure Statement as well as all non-specific government grants. Other fees, charges and service income is recognised in the Chief Constable's Comprehensive Income and Expenditure Statement as these are generated within the Chief Constable's budget by staff under their operational direction and control. It is a requirement of IFRS15 Revenue from Contracts with Customers that revenue is recognised only once the performance criteria in the contract are met, service contracts are subject to an annual review of performance criteria to ensure any necessary adjustment are made.

Note 2 Expenditure and Funding Analysis

The Expenditure and Funding Analysis shows how annual expenditure is used and funded from resources (government grants, rents, council tax and business rates) by local authorities in comparison with those resources consumed or earned by authorities in accordance with the generally excepted accounting practices. It also shows how this expenditure is allocated for decision making purposes between the forces departments. Income and expenditure accounted for under generally excepted accounting practices is presented more fully in the Comprehensive Income & Expenditure Statement.

2022/23				2023/24			Notes
Net Expenditure Chargeable to the General Fund	Adjustments between the Funding and Accounting Basis	Net Expenditure in the Comprehensive Income & Expenditure Statement		Net Expenditure Chargeable to the General Fund	Adjustments between the Funding and Accounting Basis	Net Expenditure in the Comprehensive Income & Expenditure Statement	
£'000	£'000	£'000		£'000	£'000	£'000	
88,024	0	88,024	Policing	88,039	0	88,039	
54,852	-71	54,781	Collaborated Units	60,548	-98	60,450	
27,461	21,254	48,715	Corporate & Support Services	35,822	-9,567	26,255	
170,338	21,183	191,521	Net Cost of Services	184,410	-9,665	174,745	
-170,338	27,381	-142,967	Other Income & Expenditure	-184,410	34,064	-150,346	
0	48,564	48,564	(Surplus) or Deficit	0	24,399	24,399	6
		0	Opening General Fund Balance	0			
		0	Less/ Plus Surplus or (Deficit) on General Fund Balance in Year.	0			
		0	Closing General Fund Balance as at 31 March	0			

Note 3: PCC Funding for Resources Consumed / Intra-Group Adjustments

The background and principles that underpin the accounting arrangement and create the need for an intra-group adjustment are explained in the Explanatory Foreword.

Under the current arrangements the Chief Constable does not hold any cash or reserves. However a budget is delegated to the Chief Constable for which the Chief Constable has operational control of the associated income and expenditure. It is felt that to accurately reflect the financial impact of the day-to-day control exercised by the Chief Constable over policing Bedfordshire it is necessary to capture the income and expenditure associated with their delegated budget on their own Comprehensive Income and Expenditure Statement. As a consequence the associated assets and liabilities relating to these balances are also required to be shown on the Chief Constable's balance sheet.

The Commissioner has undertaken to fund the resources consumed by the Chief Constable and makes all payments from the police fund. In order to reflect this position in the accounts the funding from the Commissioner offsets all expenditure on the Chief Constable's Comprehensive Income & Expenditure Statement to leave just the movement on unusable reserves which is reflected in the Chief Constable's Movement in Reserves Statement.

The following table shows the calculation of the funding provided to the Chief Constable:

<i>PCC Funding provided to the Chief Constable for Resources Consumed</i>	2023/24	2022/23
	£'000	£'000
Net Cost of Services (Chief Constable)	-174,745	-191,521
Financing & Investment Income & Expenditure	-43,438	-37,771
Actuarial (gain) / loss on pension assets / liabilities	21,064	532,964
<u>Adjust for Movement in Unusable Reserves:</u>		
Pensions Reserve	1,721	-485,510
Accumulated Absences Reserve	1,615	1,110
Total Funding Transfer	-193,784	-180,728

In practice instead of transferring this funding to the Chief Constable the Commissioner makes all payments on their behalf, therefore an element of the resources consumed by the Chief Constable remain unpaid at the year end. This leaves the Chief Constable with its own current liabilities which after deduction of current assets is supported by the Commissioner in the form of an Intra-group creditor / debtor.

Intra-group Debtor / Creditor	31 March 2024	31 March 2023
	£'000	£'000
Chief Constable's Creditors & Receipts in Advance	28,311	26,064
Chief Constable's Provisions	700	813
Chief Constable's Current assets (excluding PCC Debtor)	-11,898	-10,107
Total Owing to Commissioner	17,113	16,770

This has the effect of showing working capital on the Chief Constable's balance sheet which is then supported by the Commissioner.

The following table shows the movement through the intra-group account:

Intra-group Adjustments	The Chief Constable £'000	The Commissioner £'000	The Group £'000
<i>Comprehensive Income & Expenditure Statement – 2022/23</i>			
PCC Funding for Resources Consumed	-180,728	180,728	0
<i>Comprehensive Income & Expenditure Statement – 203/24</i>			
PCC Funding for Resources Consumed	-193,784	193,784	0
<i>Balance Sheet – 2022/23</i>			
Intra Group Creditor / Debtor	16,770	-16,770	0
<i>Balance Sheet – 2023/24</i>			
Intra Group Creditor / Debtor	17,113	-17,113	0

Note 4: Standards Issued but not yet Adopted

The standards introduced by the 2024/25 Code where disclosures are required in the 2023/24 financial statements, in accordance with the requirements of paragraph 3.3.4.3 of the Code, are:

- **Classification of Liabilities as Current or Non-current (Amendments to IAS 1)** issued in January 2020. The amendments:
 - a) specify that an entity's right to defer settlement must exist at the end of the reporting period
 - b) clarify that classification is unaffected by management's intentions or expectations about whether the entity will exercise its right to defer settlement
 - c) clarify how lending conditions affect classification, and
 - d) clarify requirements for classifying liabilities an entity will or may settle by issuing its own equity instruments.
- **Non-current Liabilities with Covenants (Amendments to IAS 1)** issued in October 2022. The amendments improved the information an entity provides when its right to defer settlement of a liability for at least 12 months is subject to compliance with covenants.

Changes to these accounting standards are included in the 2023/24 CIPFA Code of Practice and once adopted may require disclosure in 2023/24 depending on their impact.

Note 5: Note to the Expenditure & Funding Analysis.

Adjustments between Accounting and Funding Basis

Chief Constable – 2023/24	Adjustments for Capital Purposes £'000	Net Change for the Pensions Adjustments £'000	Other Differences £'000	Total Adjustments £'000
Policing	0	0	0	0
Collaborated Units	-98	0	0	-98
Corporate / Support Services	-1,182	-9,999	1,614	-9,567
Cost of Services	-1,280	-9,999	1,614	-9,665
Other Income & Expenditure from the Expenditure & Funding Analysis	1,280	32,784	0	34,064
Difference between General Fund surplus or deficit and Comprehensive Income & Expenditure Statement Surplus or Deficit on the Provision of Services	0	22,785	1,614	24,399

Chief Constable – 2022/23	Adjustments for Capital Purposes £'000	Net Change for the Pensions Adjustments £'000	Other Differences £'000	Total Adjustments £'000
Policing	0	0	0	0
Collaborated Units	-71	0	0	-71
Corporate / Support Services	-1,976	22,120	1,110	21,254
Cost of Services	-2,047	22,120	1,110	21,183
Other Income & Expenditure from the Expenditure & Funding Analysis	2,047	25,334	0	27,381
Difference between General Fund surplus or deficit and Comprehensive Income & Expenditure Statement Surplus or Deficit on the Provision of Services	0	47,454	1,110	48,564

Note 6: Expenditure & Income Analysed by Nature

	2023/24	2022/23
Expenditure / Income	£'000	£'000
Expenditure		
Employee benefits expenses	198,095	212,856
Other services expenses	34,615	29,982
TOTAL EXPENDITURE	232,710	242,838
Income		
Fees, charges and other service income	-14,527	-13,547
Funding from Police & Crime Commissioner	-193,784	-180,728
TOTAL INCOME	-208,311	-194,275
Surplus or Deficit on the Provision of Services	24,399	48,563

Note 7: Adjustments Between Accounting Basis & Funding Basis

This note details the adjustments that are made to the Chief Constable's available resources in the Total Comprehensive Income and Expenditure Statement in accordance with proper accounting practice.

2023/24 – Usable Reserves				
	Police Fund	Capital Receipts Reserve	Capital Grant Unapplied Account	Movement in Unusable Reserves
	£'000	£'000	£'000	£'000
Adjustments involving the Compensated Absences Adjustment Account:				
Amount by which officer remuneration charged to Comprehensive Income & Expenditure Statement on an accruals basis is different from remuneration chargeable in the year in accordance with statutory requirements	-1,614	0	0	1,614
Adjustments involving the pensions reserves:				
Reversal of items relating to post-employment benefits debited or credited to the Provision of Services in the Comprehensive Income & Expenditure Statement	-60,494	0	0	60,494
Employer's pension contributions and direct payments to pensioners	37,709	0	0	-37,709
TOTAL ADJUSTMENTS	-24,399	0	0	24,399

2022/23 – Usable Reserves				
	Police Fund	Capital Receipts Reserve	Capital Grant Unapplied Account	Movement in Unusable Reserves
	£'000	£'000	£'000	£'000
Adjustments involving the Compensated Absences Adjustment Account:				
Amount by which officer remuneration charged to Comprehensive Income & Expenditure Statement on an accruals basis is different from remuneration chargeable in the year in accordance with statutory requirements	-1,110	0	0	1,110
Adjustments involving the pensions reserves:				
Reversal of items relating to post-employment benefits debited or credited to the Provision of Services in the Comprehensive Income & Expenditure Statement	-84,763	0	0	84,763
Employer's pension contributions and direct payments to pensioners	37,309	0	0	-37,309
TOTAL ADJUSTMENTS	-48,564	0	0	48,564

Note 8: Financing & Investment Income & Expenditure

2022/23 £'000		2023/24 £'000
33,720	<i>Pensions Interest Cost and Expected Return on Pension Assets – Police Pensions</i>	42,650
4,051	<i>Pensions Interest Cost and Expected Return on Pension Assets – LGPS</i>	781
0	Impairment Allowance Adjustment– Doubtful Debts	7
37,771	Total	43,438

Note 9: Critical Judgements In Applying Accounting Policies

In applying the accounting policies the PCC for Bedfordshire has had to make certain judgements and assumptions about complex transactions or those involving uncertainty about future events.

- In order to apply the group accounting requirements the relationship between the PCC and Chief Constable has been assessed. The PCC remains in control of all assets and reserves however it is judged that the Chief Constable has sufficient operational control over staff and delegated budgets that this expenditure and associated income is shown on the Comprehensive Income and Expenditure Statement for the Chief Constable.
- The Chief Constable for Bedfordshire is involved in various joint arrangements with other forces. These arrangements are judged to be joint operations due to the joint management and decision making structure of the agreement. The Chief Constable for Bedfordshire's share of transactions and balances are consolidated into the financial statements in accordance with the CIPFA Code of Practice.
- The accounting arrangements for the Counter Terrorism Policing (CTP) are not judged to be a joint arrangement as although it is governed by a management board and decisions made on a unanimous basis, the unit is entirely grant funded therefore decisions regarding the level of funding and hence the service provided are not entirely made by the forces involved.

Note 10: Assumptions Made about the Future & Other Estimation Uncertainties

The preparation of financial statements requires management to make judgements, estimates and assumptions that affect the amounts reported as assets and liabilities as at the balance sheet date and the income and expenses reported during the year. However, the nature of estimation means that actual outcomes could differ from those estimates. The key judgements and areas of estimation uncertainty that have a significant risk of causing material adjustment to the carrying amounts of assets and liabilities within the next financial year are:

- Estimation of the net liability to pay pensions depends on a number of complex judgements relating to the discount rate used, the rate at which salaries increase, changes in retirement ages, mortality rates and expected returns on pension fund assets. Actuaries are used to make these judgements and provide the estimates of pension assets and liabilities, the details of which are detailed at note 25 along with a sensitivity analysis of the key assumptions used. Actuaries also identify the risks of participating in a defined benefit pension scheme which is shown below:

Risk	Comment
Investment risk	The fund may hold investments in asset classes, such as equities, which have volatile market values and while these assets are expected to provide real returns over the long term, the short-term volatility can cause additional funding to be required if a deficit emerges.
Interest rate risk	The fund's liabilities are assessed using market yields on high quality corporate bonds to discount future liability cashflows. As the Fund holds assets such as equities the value of the assets and liabilities may not move in the same way.
Inflation risk	All of the benefits under the fund are linked to inflation and so deficits may emerge to the extent that the assets are not linked to inflation.
Longevity risk	In the event that the members live longer than assumed a deficit will emerge in the fund. This may be mitigated by a longevity insurance contract if held by the fund. There are also other demographic risks.
Climate risk	Climate risk can be grouped into two categories; Physical and Transitional risks. Physical risks are direct risks associated with an increased global temperature such as heatwaves and rising sea levels. Transitional risks are the costs of transitioning to a low carbon economy. These risks will manifest themselves in many of the other risks detailed above which the fund is exposed to, for example investment returns may be affected.
Regulatory risk	Regulatory uncertainties could result in benefit changes to past or future benefits which could result in additional costs.
Orphan risk	As many unrelated employers participate in each fund, there is an orphan liability risk where employers leave the fund but with insufficient assets to cover their pension obligations so that the difference may fall on the remaining employers in that fund.

Note 11: Financial Instruments

Categories of Financial Instruments

The borrowings and investments disclosed in the balance sheet are made up of the following categories of financial instruments, all are valued at amortised cost.

Financial Assets	31 March 24		31 March 23	
	The Chief Constable		The Chief Constable	
	Non Current	Current	Non Current	Current
	£'000	£'000	£'000	£'000
<u>Debtors:</u>				
Amortised Cost	0	6,732	0	5,260
<u>Investments:</u>				
Amortised Cost	0	0	0	0
<u>Cash</u>				
Amortised Cost	0	0	0	0
Total Financial Assets	0	6,732	0	5,260
Non Financial Assets	0	22,216	0	21,540
Total	0	28,948	0	26,800

Financial Liabilities	31 March 24		31 March 23	
	The Chief Constable		The Chief Constable	
	Non Current	Current	Non Current	Current
	£'000	£'000	£'000	£'000
<u>Creditors:</u>				
Amortised Cost	0	23,629	0	21,904
<u>Borrowings:</u>				
Amortised Cost	0	0	0	0
Total Financial Liabilities	0	23,629	0	21,904
Non Financial liabilities	0	13,430	0	11,286
Total	0	37,059	0	33,190

Trade Debtors and Creditors relate to balance sheet amounts (excluding payments in advance and receipt in advance) adjusted for statutory debtors and creditors.

The PCC for Bedfordshire has not reclassified any financial instruments during 2023/24 and all remain at amortised cost.

Income and Expense Gains and Losses

All interest income and expenditure relates to the Commissioners accounts.

Fair Value of Assets and Liabilities

Financial liabilities and financial assets represented by loans and receivables are carried in the Balance Sheet at amortised cost. Their fair value has been calculated below by calculating the net present value of the future cash flows using the following assumptions:

- The discount rate used is the applicable market rate on 31st March using bid prices where applicable.
- For fixed term deposits it is assumed that interest is received on maturity.
- The new borrowing rate at 31 March has been used as the discount factor for PWLB borrowing.
- The fair value of trade and other receivables is taken to be the invoiced or billed amount

The fair value of each class of financial liabilities and assets carried in the Balance Sheet at amortised cost is as follows:

	The Chief Constable			
	31 March 24		31 March 23	
	Carrying Value	Fair Value	Carrying Value	Fair Value
	£'000	£'000	£'000	£'000
<i>Financial Liabilities:</i>				
<i>PWLB Borrowing</i>	0	0	0	0
Creditors	23,629	23,629	21,904	21,904
<i>Loans and Receivables:</i>				
Short-Term Investments	0	0	0	0
Debtors	6,732	6,732	5,260	5,260
Instant Access Bank Deposit Accounts	0	0	0	0
Imprest & Cash	0	0	0	0

The carrying value of short term trade receivables and payables, short term investments and cash balances is deemed to be a reasonable approximation of fair value.

No financial instruments have been re-classified during 2023/24.

Note 12: Lease Rentals

The PCC for Bedfordshire has no finance leases, but rents several properties under the terms of operating leases. The majority of the operating lease costs are included in the Chief Constable's Comprehensive Income & Expenditure Statement to reflect the day-to-day direction and control exercised. The amount paid in 2023/24 was £0.744M (£0.553M for 2022/23).

At 31 March 2024 lease payments due under non-cancellable leases in future years were:

	Less than 1 Year	Later than 1 Year and not Later than 5 Years	Later than 5 Years	Total
	£'000	£'000	£'000	£'000
Land & Buildings	676	2,775	811	4,262

Note 13: Debtors & Payments In Advance

31 March 23		31 March 24
£'000		£'000
1,263	Trade Receivables	2,800
-2	Less Expected Credit Losses	-9
0	Council Tax	0
4,892	Other Receivables	4,828
3,866	Prepayments	4,217
10,030	Short Term Debtors at 31st March	11,835
16,770	Amount Owed by PCC	17,113
26,800	Total Amounts Due within 1 Year	28,948

Note 14: Creditors

The creditors of the Chief Constable for Bedfordshire can be analysed as follows:

31 March 23 £'000		31 March 24 £'000
-2,798	Trade Payables	-3,032
-22,675	Other Payables - Capital & Revenue	-24,650
-448	Other Payables - Employees	-563
-134	Receipts in Advance	-67
-7,134	Short Term Accumulating Absences	-8,748
-33,189	Short Term Creditors 31st March	-37,060

Note 15: Unusable Reserves

2022/23 £'000		2023/24 £'000
20,585	Pensions Reserve – LGPS	7,696
926,790	Pensions Reserve – Police Pensions	941,400
7,134	Accumulated Absences Account	8,748
954,509	Total Unusable Reserves	957,844

Accumulated Absences Account

Accumulated Absences Account absorbs the differences that would otherwise arise on the General Fund Balance from accruing for compensated absences earned but not taken in the year. Statutory arrangements require that the impact on the General Fund Balance is neutralised by transfers to or from the account. Although the costs of employment benefits are shown in the Chief Constable's accounts the PCC funds this by way of an intra-group adjustment and maintains this un-usable reserve.

2022/23 £'000		2023/24 £'000
6,024	Balance at 1st April	7,134
-6,024	Cancellation of accrual made at the end of the preceding year	-7,134
7,134	Amounts accrued at the end of the current year	8,748
7,134	Balance at 31st March	8,748

Pensions Reserves

The pension reserves absorb the timing differences arising from the different arrangements for accounting for post-employment benefits and for funding benefits in accordance with statutory provisions. The Chief Constable for Bedfordshire accounts for post-employment benefits in their Comprehensive Income and Expenditure Statement as the benefits are earned by employees under their control accruing years of service, updating their liabilities recognised to reflect inflation, changing assumptions and investment returns on any resources set aside to meet the costs. The debit balance on the Chief Constable and Group Pension Reserves therefore shows a substantial shortfall in the benefits earned by past and current employees and the resources the Group has set aside to meet them. The statutory arrangements will ensure that funding will have been set aside by the time the benefits come to be paid.

2022/23 £'000 (Re-stated)	Pension Reserve Local Government Scheme	2023/24 £'000
160,215	Balance at 1 st April	20,585
-154,445*	Re-measurements of the net defined benefit liability.	-13,003
22,943*	Reversal of items relating to retirement benefits debited or credited to the Surplus or Deficit on the Provision of services in the Comprehensive Income and Expenditure Statement	8,854
-8,128	Employer's pension contributions and direct payments to pensioners payable in the year	-8,740
20,585*	Balance at 31 st March	7,696

2022/23 £'000 (Re-stated)	Pension Reserve Police Pension Scheme	2023/24 £'000
1,272,670	Balance at 1 st April	926,790
-378,519*	Re-measurements of the net defined benefit liability	-8,320
61,820	Reversal of items relating to retirement benefits debited or credited to the Surplus or Deficit on the Provision of services in the Comprehensive Income and Expenditure Statement	51,900
-29,181	Employer's pension contributions and direct payments to pensioners payable in the year	-28,970
926,790*	Balance at 31 st March	941,400

* These line items for 2022/23 have been restated to correct inconsistencies between the previously disclosed amounts and the rest of the financial statements. This was a disclosure error only. There is no impact on the amounts reported in primary statements for the year ended 31 March 2023 from this matter.

Note 16: Cash Flow Statement – Operating Activities

2022/23		2023/24
The Chief Constable		The Chief Constable
£'000		£'000
48,564	Net surplus or deficit on the provision of services	24,399
252	Contributions (to) / from provisions	113
0	Depreciation & Impairment	0
-47,454	IAS 19 pension adjustments	-22,785
3	Increase / (decrease) stock	-4
-888	Increase / (decrease) debtors	1,806
-3,795	Increase / (decrease) debtors – Inter Company	342
3,318	(Increase)/ decrease in creditors	-3,871
-48,564	Adjust net surplus or deficit on the provision of services for non-cash movement	-24,399
-	Remove profit / loss on sale of non-current assets	-
0	Net cash flows from operating activities	0

Note 17: Officers Remuneration

The number of employees whose remuneration, excluding pension contributions and redundancy payments, was £50,000 or more in bands of £5,000 as shown below.

2022/23	Remuneration Band £	2023/24
243	50,000 to 54,999	275
150	55,000 to 59,999	202
102	60,000 to 64,999	138
25	65,000 to 69,999	66
11	70,000 to 74,999	22
13	75,000 to 79,999	7
6	80,000 to 84,999	9
3	85,000 to 89,999	5
2	90,000 to 94,999	4
3	95,000 to 99,000	2
0	100,000 to 104,999	3
0	105,000 to 109,999	0
558	TOTALS	733

The employees in the bandings above do not include the remuneration of the posts of Senior Officers and Relevant Police Officers which are now separately disclosed below as required by the Accounts and Audit Regulations or the redundancy payments now disclosed separately.

Note 18: Exit Packages

All packages are disclosed as per the amounts of remuneration paid to the Chief Constable for Bedfordshire's employees regardless of whether they were funded by collaboration or not.

Cost band	Number of compulsory redundancies	Number of other departures agreed	Total number of exit packages in each band	Total cost of exit packages in each band
£40,000-£60,000	2	0	2	£90,400
£20,000-£40,000	3	2	5	£137,400
<£20,000	4	1	5	£50,600
Total	9	3	12	£278,400

In addition and as a result of collaboration agreements, Bedfordshire contributed towards exit packages for Hertfordshire and Cambridgeshire staff of £75K and 31K respectively. These were exit packages incurred in forming new collaborated units and funded by existing cost sharing principles.

Exit Packages 2022/23

Cost band	Number of compulsory redundancies	Number of other departures agreed	Total number of exit packages in each band	Total cost of exit packages in each band
£40,000-£60,000	3	0	3	£146,200
£20,000-£40,000	1	0	1	£37,900
<£20,000	2	0	2	£10,200
Total	6	0	6	£194,300

In addition and as a result of collaboration agreements, Bedfordshire contributed towards exit packages for Hertfordshire and Cambridgeshire staff of £28K and £18K respectively, Hertfordshire and Cambridgeshire also contributed towards £3K of Bedfordshire exit packages. These were exit packages incurred in forming new collaborated units and funded by existing cost sharing principles.

Note 19: Senior Officers and Relevant Police Officers Remuneration

	Salary, fees and allowances	Employers Pension Contribution	Reimbursement of Expenses	Benefit in Kind	Total
	£	£	£	£	£
Chief Constable	193,565	53,883	100	4,392	251,940
Deputy Chief Constable	145,245	40,510	1,886	0	187,641
Assistant Chief Constable – A	127,211	31,447	0	0	158,658
Assistant Chief Constable – B (Note 2)	81,026	24,557	1,464	0	107,047
Assistant Chief Constable – C (Note 3)	96,875	29,311	936	0	127,122
Assistant Chief Constable – D (Note 4)	70,399	16,312	354	0	87,065
Chief Constable's Chief Finance Officer (Note 1)	155,264	25,003	0	2,573	182,840

Notes

Note 1: The CFO to the CC was also the CFO to the PCC - estimated allocation 90/10

Note 2: Role undertaken 08/08/23 to 31/03/24

Note 3: Role undertaken 30/05/23 to 31/03/24

Note 4: Role Undertaken 01/04/23 to 18/10/23

Senior Officers and Relevant Police Officers Remuneration 2022/23

	Salary, fees and allowances	Employers Pension Contribution	Reimbursement of Expenses	Benefit in Kind	Total
	£	£	£	£	£
Chief Constable – A (Note 1)	133,826	38,835	0	1,619	174,280
Chief Constable B (Note 2)	86,416	25,196	174	1,141	112,927
Deputy Chief Constable - A (Note 3)	68,448	18,674	74	2,203	89,399
Deputy Chief Constable - B (Note 4)	21,190	5,908	0	0	27,098
Assistant Chief Constable – A	124,445	28,786	1,125	0	154,356
Assistant Chief Constable – B	113,066	28,786	0	0	141,852
Assistant Chief Constable – C (Note 5)	92,072	24,682	80	460	117,294
Chief Constable's Chief Finance Officer	138,749	22,994	0	2,892	164,635

Notes

Note 1: Role undertaken 01/04/22 to 2/01/23

Note 2: Role undertaken 26/09/22 to 31/03/23

Note 3: Role Undertaken 01/04/22 to 25/09/22.

Note 4: Role undertaken from 06/02/23 to 31/03/23

Note 5: Role undertaken from 01/04/22 to 29/11/22.

Note 20: External Audit Fees

External audits were provided by BDO LLP in 2022/23 and by KPMG in 2023/24.

2022/23		2023/24
£'000		£'000
11	Audit Fee Re Chief Constable	47,040

Note 21: Eastern Region Organised Crime Unit

The Eastern Region Organised Crime Unit (ROCU) is a joint arrangement between 7 forces – Hertfordshire, Cambridgeshire, Essex, Suffolk, Norfolk, Kent and Bedfordshire to provide one serious and organised crime unit for the eastern region. ROCU is run by a management board where all forces are equally represented and decisions are made with the unanimous consent of all forces.

Expenditure of £3.475M has been consolidated into the Chief Constable's Income and Expenditure statement. The government grants of £0.796M has been consolidated into the Income and Expenditure Statement for the PCC, and the PCC for Bedfordshire's share of the total assets purchased (£0.104M) are included on the PCC's balance sheet financed by capital grant and transfer from the revenue budget.

The income and expenditure statement for the units is shown below:

2023/24	Beds	Cambs	Essex	Herts	Kent	Norfolk	Suffolk	Total
	£'000	£'000	£'000	£'000	£'000	£'000	£'000	£'000
Revenue Grant	-789	-1002	-1979	-1430	-1347	-1127	-872	-8,547
Capital Grant	-7	-8	-17	-12	-18	-10	-7	-80
Running Costs	3,475	4,410	5,578	6,295	5,412	4,962	3,837	33,968
Depreciation	96	105	56	162	34	127	101	681
Surplus / Deficit	2,775	3,505	3,637	5,015	4,080	3,952	3,059	26,022

2022/23	Beds	Cambs	Essex	Herts	Kent	Norfolk	Suffolk	Total
	£'000	£'000	£'000	£'000	£'000	£'000	£'000	£'000
Revenue Grant	-868	-1,095	-1,881	-1,559	-1,270	-1,236	-954	-8,864
Capital Grant	-221	-280	-81	-399	-74	-316	-243	-1,615
Running Costs	3,156	3,985	4,591	5,671	4,372	4,495	3,468	29,739
Depreciation	46	46	32	74	16	58	47	318
Surplus / Deficit	2,112	2,655	2,661	3,788	3,044	3,001	2,317	19,579

Note 22: Bedfordshire, Hertfordshire and Cambridgeshire Strategic Alliance

	Beds 2022/23 £000	Cambs 2022/23 £000	Herts 2022/23 £000	Total 2022/23 £000		Beds 2023/24 £000	Cambs 2023/24 £000	Herts 2023/24 £000	Total 2023/24 £000
Joint Protective Services					Joint Protective Services				
Armed Policing Units	3,368	3,007	3,554	9,929	Armed Policing Units	3,812	3,412	4,088	11,261
Jps Command	400	504	718	1,621	Jps Command	453	575	820	1,847
Dog Units	869	1,066	1,443	3,378	Dog Units	938	1,156	1,568	3,662
Major Crime Unit	2,419	2,884	3,567	8,870	Major Crime Unit	2,609	3,122	3,868	9,599
Operational Planning	313	395	563	1,271	Operational Planning	309	392	560	1,261
Resilience	102	128	183	413	Resilience	95	120	172	386
Roads Policing Unit	2,808	4,007	5,386	12,201	Roads Policing Unit	2,843	4,076	5,487	12,406
Scientific Services	2,579	3,109	4,235	9,923	Scientific Services	3,386	4,057	5,420	12,863
Total Joint Protective Services	12,857	15,100	19,648	47,605	Total Joint Protective Services	14,444	16,909	21,931	53,284
Operational Support					Operational Support				
Custody & Criminal Justice Smt	278	170	500	948	Custody & Criminal Justice Smt	319	196	575	1,090
Criminal Justice Unit	518	654	931	2,103	Criminal Justice Unit	461	585	1,003	2,049
Delivery Management Office	377	476	678	1,531	Joint Strategy & Transformation	337	428	612	1,377
Cameras Tickets & Collisions	(49.9)	(62.5)	(83.0)	(195.4)	Cameras Tickets & Collisions	55	69	92	217
Firearms & Explosive Licenses	149	289	235	673	Firearms & Explosive Licenses	170	329	268	767
ICT***	4,238	5,346	7,611	17,195	ICT***	6,925	8,699	12,481	28,105
-	-	-	-	-	-	-	-	-	-
Total Operational Support Expenditure	5,511	6,872	9,871	22,254	Total Operational Support Expenditure	8,267	10,306	15,031	33,605
Organisational Support					Organisational Support				
Collaboration Team	-	-	-	-	- Corporate Comms	62	78	112	251
Hr L&D	4,572	5,768	8,212	18,552	Hr L&D	4,786	6,362	9,025	20,174
Information Management Depts	901	1,136	1,617	3,654	Information Management Depts	980	1,244	1,775	4,000
Professional Standards	1,546	1,580	2,313	5,440	Professional Standards	1,946	2,118	2,910	6,974
Joint Uniform Stores	71	90	128	288	Joint Uniform Stores	77	98	140	315
					Finance	31	171	56	258
					BCH Payroll	152	193	276	622
					Uplift Programme Board	42	53	75	170
					Police Transformation Fund	8	10	15	34
					BCH Implementation	26	33	-	59
Total Organisational Support Expenditure	7,090	8,574	12,270	27,934	Total Organisational Support Expenditure	8,110	10,361	14,385	32,856
Total BCH Net Operating Costs	25,458	30,546	41,790	97,793	Total BCH Net Operating Costs	30,822	37,577	51,347	119,746
Joint Procurement Unit*	129	243	460	832	Joint Procurement Unit*	255	238	471	963
					Pension Dep**	191	-	-	191
Total Net Operating Costs	25,587	30,789	42,249	98,625	Total Net Operating Costs	31,267	37,814	51,818	120,900

The Joint Procurement Unit* is part of the 7F element.

The Pension Dep** in 23/24 relates to Beds McCloud.

Prior to 2023/24 the ICT*** values were not reported as such and not included in the above table.

The 2022/23 values are shown below in the total £9,505,043.

Note 23: Related Party Transactions

The Financial Reporting Standard on Related Party Disclosures (IAS 24) and the CIPFA Code of Practice require that material 'related party' transactions are disclosed in the Statement of Accounts.

Other Public Bodies Subject to Common Control

UK Government exercises some control over the general operations of the Chief Constable for Bedfordshire and it is responsible for the majority of funding from the Police & Crime Commissioner in the form of grants. Details of grants received from government departments are disclosed in the Group Accounts.

Material transactions with other public bodies have been disclosed in other notes to the Accounts (see notes 21-22).

Officers

A review to determine related party transactions with the Chief Constable for Bedfordshire involved all senior members of staff. No related parties were identified in this review.

Entities Controlled by or Significantly Influenced by the Chief Constable for Bedfordshire.

The PCC for Bedfordshire empowers the Chief Constable as a separate entity via a scheme of governance and all contracts have been entered into in compliance with the Scheme of Governance. A full explanation of this relationship is set out in the Explanatory foreword.

Note 24: Events After the Balance Sheet Date

The Draft Statement of Accounts was authorised for issue by the Chief Finance Officer on 14 June 2024. Events after the balance sheet date have been considered for inclusion in the accounts up to the authorised for issue date. No non-adjusting events have taken place as no events have occurred before this date which provided information about conditions existing at 31st March 2024.

Note 25: Defined Benefit Pension Schemes

The costs and liabilities associated with the retirement benefits are recorded in the Chief Constable's accounts, the costs are then funded and liabilities guaranteed by the Commissioner via an intra-group adjustment. A negative pension reserve is held on the Commissioner's balance sheet.

As part of the terms and conditions of employment of its officers and other employees, the Chief Constable for Bedfordshire offers retirement benefits. Although these benefits will not actually be payable until employees retire, the Chief Constable has a commitment to make the payments that need to be disclosed at the time that employees earn their future entitlement.

The Chief Constable for Bedfordshire participates in two pension schemes:

- The Local Government Pension Scheme (LGPS) for police staff, administered by Bedford Borough Council – this is a funded defined benefit final salary scheme, meaning that the PCC for Bedfordshire and employees pay contributions into a fund, calculated at a level intended to balance the pensions liabilities with investment assets.
- The Police Pension Scheme for Police Officers – this is an unfunded defined benefit final salary scheme administered by the PCC for Bedfordshire, meaning that there are no investment assets built up to meet the pensions liabilities, and cash has to be generated to meet actual pensions payments as they eventually fall due. Under the Police Pension Fund Regulations 2007, if the amounts receivable by the pensions fund for the year is less than amounts payable, the police authority must annually transfer an amount required to meet the deficit to the pension fund. Subject to parliamentary scrutiny and approval, up to 100% of this cost is met by central government pension top-up grant. If however the pension fund is in surplus for the year, the surplus is required to be transferred from the pension fund to the police authority which then must repay the amount to central government.

Quoted securities held as assets in the LGPS defined benefit pension scheme are valued at bid price.

The costs of retirement benefits are recognised in the Cost of Services when they are earned by employees, rather than when the benefits are eventually paid as pensions. However, the charge that the PCC for Bedfordshire is required to make against Council Tax is based on the cash payable in the year, so the real cost of retirement benefits is reversed out through the Movement in Reserves Statement. The transactions below are included in the Comprehensive Income and Expenditure Statement during the year:

	Local Government Pension Scheme		Police Pension Scheme	
	2022/23	2023/24	2022/23	2023/24
	£'000	£'000	£'000	£'000
Net Total Cost of Service				
Current Service Costs*	18,950	7,956	28,100	9,250
Past Service Costs/Gains	95	117	0	0
Losses/Gains on Curtailments & Settlements	0	0	0	0
Surplus or Deficit on the Provision of Services				
Interest Costs	9,154	10,505	33,720	42,650
Interest Income on plan assets	-5,103	-9,724	0	0
Other Comprehensive Income & Expenditure				
<u>Re-measurements:</u>				
Actuarial gains and losses arising on changes in demographic assumptions	-6,071	-2,356	-22,420	0
Actuarial gains / losses arising on changes in financial assumptions	-176,853	-7,155	-439,140	-19,770
Other actuarial gains (assets & liabilities)	-2,189	0	0	0
Other experience gains and losses	23,611	662	0	0
Impact of Asset Ceiling	0	14,948	83,041	11,450
Return on plan assets (excl amount in net interest expense)	6,904	-19,102	0	0
Total Charge to the Comprehensive Income and Expenditure Statement	-131,502	-4,149	-316,699	43,580
Movement in Reserves Statement				
Reversal of net charges made for retirement benefits in accordance with IAS19*	-23,066	-8,854	-61,820	-51,900
Actual Amounts charged against the General Fund Balance for pensions in the year:				
Employers Contributions payable to the pension fund	8,128	8,740	27,075	26,888
Injury Award Benefits	0	0	2,105	2,081
*Includes £260K administration costs LGPS 23/24				

Assets and Liabilities Recognised in the Balance Sheet

The amount included in the Balance Sheet arising from the obligation in respect of its defined benefit plans is as follows:

	Funded Liabilities: Local Government Pension Scheme		Unfunded Liabilities: Police Pension Scheme	
	2022/23	2023/24	2022/23	2023/24
	£'000	£'000	£'000	£'000
Present value of the defined benefit obligation	219,580	225,799	926,790	941,400
Fair value of plan assets	-198,995	-233,051	-	-
Impact of Asset Ceiling	-	14,948	-	-
Net liability arising from the defined benefit obligation	20,585	7,696	926,790	941,400

Reconciliation of the movements in the fair value of scheme assets

	Local Government Pension Scheme	
	2022/23	2023/24
	£'000	£'000
1st April	192,915	198,995
Expected rate of return / Interest income	5,103	9,724
Re-measurement gains and losses:		
Return on plan assets, excl the amount included in the net interest expense	-6,904	19,102
Other	2,189	0
Employer contributions	7,975	8,740
Contributions by scheme participants	2,736	3,027
Benefits paid	-5,019	-6,277
31st March	198,995	233,051

The return on the Fund (on a bid value to bid value basis) for the year to 31 March 2024 is estimated to be 14.23%. The actual return on Fund assets over the year may be different.

Reconciliation of present value of the scheme liabilities

	Funded Liabilities: Local Government Pension Scheme		Unfunded Liabilities: Police Pension Scheme	
	2022/23	2023/24	2022/23	2023/24
	£'000	£'000	£'000	£'000
1st April	353,130	219,580	1,272,670	926,790
Current service cost*	18,797	7,696	28,100	9,250
Interest cost	9,154	10,505	33,720	42,650
Contributions by scheme participants	2,736	3,027	6,331	7,036
Re-measurement (gains) and losses:				
▪ Actuarial gains / losses arising from changes in demographic assumptions	-6,071	-2,356	-22,420	0
▪ Actuarial gains / losses arising from changes in financial assumptions	-176,853	-7,155	-439,140	-19,770
▪ Other actuarial gains / losses	0	0	0	
Other experience gains / losses	23,611	662	83,040	11,450
Benefits paid	-5,019	-6,277	-35,511	-36,006
Past service cost (including curtailments)	95	117	0	0
Losses / (gains) on settlements	0	0	0	0
31st March	219,580	225,799	926,790	941,400

Reconciliation of the opening and closing surplus / (deficit)

	Funded Liabilities: Local Government Pension Scheme		Unfunded Liabilities: Police Pension Scheme	
	2022/23	2023/24	2022/23	2023/24
	£'000	£'000	£'000	£'000
Opening Surplus (deficit)	-160,215	-20,585	-1,272,670	-926,790
Current Service Cost	-18,950	-7,956	-28,100	-9,250
Contributions by employer	8,128	8,740	29,181	28,970
Past Service Costs	-95	-117	0	0
Interest Cost	-9,154	-10,505	-33,720	-42,650
Interest Income on Plan Assets	5,103	9,724	0	0
Expected Return on Assets	2,189	0	0	0
Re-measurement Gains / (losses)	152,409	13,003	378,519	8,320
31st March	-20,585	-7,696	-926,790	-941,400

Local Government Pension Scheme assets comprised:

Asset breakdown	31 Mar 2024		31 Mar 2023	
	£000s	%	£000s	%
Equities	143,288	61%	128,109	64%
Bonds	42,498	18%	36,537	18%
Property	33,409	14%	26,779	13%
Cash	14,755	6%	8,440	4%
Total	233,950	100%	199,865	100%

The final asset allocation of the Fund assets is likely to be different from that shown due to estimation techniques. Based on the above the employers share of the Fund assets is approximately 6.76%.

Asset breakdown		31 March 2024	
		% Quoted	% Unquoted
Corporate Bonds	UK	-	-
	Overseas	5%	-
Equities	UK	-	-
	Overseas	-	8%
Property		-	5%
Absolute return portfolio		4%	-
Private Equity		-	2%
Infrastructure		-	9%
Unit trust		-	47%
Private Debt		-	3%
Multi-Asset Credit		-	10%
Climate Opportunities		-	0%
Cash/Temporary Investments		-	6%
Total		9%	91%

In relation to the LGPS the suitability of various types of investments has been considered as has the need to diversify investments to reduce the risk of being invested in too narrow a range, however a large proportion of assets relate to equities which have remained at a consistent level.

Basis for estimating Assets and Liabilities

Liabilities have been assessed on an actuarial basis using the projected unit method, an estimate of the pensions that will be payable in future years dependent on assumptions about mortality rates, salary levels, etc. The Borough Council Fund liabilities have been assessed by Barnett Waddingham LLP, an independent firm of actuaries. The Police Pension scheme liabilities have been assessed using the Government Actuary Department's IAS19 spread sheet (GFS) which has been designed to satisfy the disclosure requirements contained within the CIPFA Code of Practice.

The significant assumptions used by the actuaries are:

	Local Government Pension Scheme		Police Pension Scheme	
	2022/23	2023/24	2022/23	2023/24
	%	%	%	%
Long-term expected rate of return on assets in the scheme:				
Mortality Assumptions:				
Longevity at 65 for current pensioners				
- Men	21.4	21.1	21.9	21.9
- Women	24.2	23.9	23.3	23.6
Longevity at 65 for future pensioners				
- Men	22.4	22.2	23.5	23.6
- Women	25.8	25.5	25.0	25.1
Rate of inflation – CPI	2.90	2.85	2.60	2.60
Rate of increase in salaries	3.90	3.85	3.85	3.85
Rate of CARE revaluation	-	-	3.85	3.85
Rate of increase in pensions	2.90	2.85	2.60	2.60
Rate for discounting scheme Liabilities	4.80	4.95	4.65	4.75
Take-up of option to convert annual pension into retirement lump sum (pre April 08 service)	50	50	-	-
Take-up of option to convert annual pension into retirement lump sum (post April 08 service)	75	75	-	-

The estimation of the defined benefit obligations is sensitive to the actuarial assumptions set out in the table above. The sensitivity analysis below has been determined based on reasonably possible changes in assumptions occurring at the end of the reporting period and assumes for each change that the assumption analysed changes while all other assumptions remain constant, in reality changes in some assumptions may be interrelated.

For the Police Pension Scheme actuarial gains have resulted from updated demographic assumptions as the actuaries have used assumptions proposed in the 2020 valuation and ONS 2020

The LGPS actuaries have adopted a set of demographic assumptions that are consistent with those used for the most recent fund valuation carried out as at 31 March 2022 except for an update of the CMU projection model to the CMI 2022 model. This gives rise to a valuation gain on £2.356M.

The majority of the actuarial gains for 23/24 result from the expected return on assets, however the accounting standards state that if an employer has an accounting surplus, it should only be recognised to the extent that it is able to recover the surplus either through reduced contributions in the future, or through refunds.

Therefore an asset ceiling is applied and this moves the fund from a surplus to a deficit once more.

As can be seen from the sensitivity analysis a small change to the assumptions can have a big impact on the liability.

Sensitivity analysis	£000s	£000s	£000s	£000s	£000s
Adjustment to discount rate	+0.5%	+0.1%	0.0%	-0.1%	-0.5%
Present value of total obligation	205,641	222,236	226,698	231,294	251,129
Projected service cost	5,876	6,888	7,165	7,452	8,711
Adjustment to long term salary increase	+0.5%	+0.1%	0.0%	-0.1%	-0.5%
Present value of total obligation	228,564	227,064	226,698	226,336	224,923
Projected service cost	7,190	7,170	7,165	7,160	7,140
Adjustment to pension increases and deferred revaluation	+0.5%	+0.1%	0.0%	-0.1%	-0.5%
Present value of total obligation	249,658	231,017	226,698	222,507	206,931
Projected service cost	8,752	7,456	7,165	6,884	5,838
Adjustment to life expectancy assumptions	+1 Year		None		- 1 Year
Present value of total obligation	234,068		226,698		219,580
Projected service cost	7,433		7,165		6,904

	Police Pension Scheme	
	Approx. Increase to Employer Liability	
	%	£'000
Change in assumptions at 31 March 2023		
0.5% decrease in Real Discount Rate	8.0%	72,000
1 year increase in member life expectancy	2.5%	23,000
0.5% increase in the Salary Increase Rate	1.0%	9,000
0.5% increase in the Pension Increase Rate	8.0%	72,000

The discount rate is based on high quality corporate bond yields of which there are very few in the market with a sufficiently long duration so an additional margin is added by the actuaries.

Impact on Cash Flows

The liabilities show the underlying commitments that the PCC for Bedfordshire Group has in the long-term to pay retirement benefits. The liability of £927M has a substantial impact on the net worth of the PCC for Bedfordshire Group as recorded in the balance sheet, resulting in a negative overall balance of £887M. However, statutory arrangements for funding the deficit mean that the financial position of the PCC for Bedfordshire Group remains healthy:

- The deficit of the LGPS will be made good by increased contributions over the remaining working life of employees, as assessed by the scheme actuary.
- Finance is only required to be raised to cover police pensions when the pensions are actually paid.

Police Pension Fund Accounting Statement

The accounting policies for the Police Pension fund are disclosed in the main accounting policies and the Chief Constable's long term pension obligations are shown separately on the balance sheet.

The Police Pension fund financing arrangements require separate accounting statements for the police pension fund. These arrangements require the Chief Constable for Bedfordshire to credit the police pensions fund with officer and employer contributions, incoming transfers and other contributions specified by the regulations. Payments made from the account include pension payments, lump sums and transfers out to other schemes. There are no investment assets held and

the fund is balanced to nil each year by receipt of a top-up grant from the Home Office to cover any deficit, or paying over any surplus to the Home Office.

Employees and employers contributions levels are based on percentages of pensionable pay set nationally by the Home Office and subject to revaluation by the Government Actuary's Department every 4 years.

There are three separate pension schemes, for which membership is based on length of service and age. Benefits and contributions rates vary for each scheme according to members personal circumstances and pay rates. The retirement age and benefits are different for each scheme. An Accounting Statement for all three schemes combined is shown below:

2022/23			2023/24	
£'000	£'000		£'000	£'000
		Contributions receivable		
		- From Employer		
-15,108		Normal	-16,573	
0		Early Retirements for Ill-Health	0	
-6,261		- From members of the Pension Scheme	-7,003	
	-21,369			-23,576
		Transfers in		
	-127	- Individual Transfers in from Other Schemes		-33
		Benefits Payable		
27,449		- Pensions	30,613	
6,329		- Commutations and Lump Sums (Including amounts payable following Milne vs. GAD legal case)	3,550	
	33,778			34,163
		Payments to and on Account of Leavers		
	56	- Individual Transfers out to Other Schemes		0
	113	-Pension Refunds		94
	12,451	Sub-Total: Net amount receivable for the year before top-up grant		10,647
	-12,451	Top-Up Grant Receivable from Police Fund		-10,647
	0	(Surplus) / Deficit for the year		0

External Advisors

The specialist nature and complexity of certain financial activities make it prudent for the Chief Constable to enhance the available internal expertise by using the services of external advisers.

External advisers have been appointed to provide additional advice and guidance in the following areas:

(i) **Financial Administration**

Financial services provided to the PCC for Bedfordshire during 2023/24 include the following:

- Internal Audit – RSM Risk Assurance Services LLP
- Pensions – XPS
- Treasury Management Advice – Link Asset Services
- Tax - RSM

(ii) **Banking**

Banking services and advice are provided by National Westminster Bank plc.

Glossary of Terms

BUDGET – A statement of the PCC for Bedfordshire's forecast of net revenue and capital expenditure over a specified period of time.

CIPFA – The Chartered Institute of Public Finance and Accountancy (CIPFA) is the professional body responsible for accountants working in the public service. The Institute provides financial and statistical information on local government and public finance matters. CIPFA is a privately funded body with charitable status.

FINANCIAL REGULATIONS – A written code of procedures intended to provide a framework for proper financial management.

FINANCIAL YEAR – The period covered by a set of financial accounts - the Police Authority financial year commences 1 April and finishes 31 March the following year.

FINANCIAL REPORTING STANDARDS (FRS) – These standards are developed by the Accounting Standards Board and regulate the preparation and presentation of financial statements. Any material departures from these standards should be disclosed in notes to the accounts.

GOVERNMENT GRANTS – Assistance by government and inter-government agencies and similar bodies, whether local, national or international, in the form of cash or transfers of assets to an Authority in return for past or future compliance with certain conditions.

GROSS EXPENDITURE – This is the total cost of providing services before taking into account income.

INCOME – Amounts due to an organisation that has been or is expected to be received.

POLICE FUND – The main account of a Police and Crime Commissioner is known as the Police Fund. Income from government grants and the Precept is paid into the fund and day-to-day spending on services is paid for from the fund. The year end balances on the fund are the general reserves (or balances) maintained as a matter of prudence.

RESERVES – The Chief Constable holds only Unusable Reserves which absorb the timing differences of the accounting entries required by the CIPFA Code, these are not cash backed reserves.

REVENUE EXPENDITURE – The day-to-day running costs incurred by a local policing body in providing services.

INDEPENDENT AUDITOR'S REPORT TO THE CHIEF CONSTABLE FOR
BEDFORDSHIRE POLICE

INDEPENDENT AUDITOR'S REPORT TO THE CHIEF CONSTABLE OF BEDFORDSHIRE POLICE

REPORT ON THE AUDIT OF THE CHIEF CONSTABLE'S FINANCIAL STATEMENTS

Disclaimer of opinion

We were engaged to audit the financial statements of the Chief Constable of Bedfordshire Police ("the Chief Constable") for the year ended 31 March 2024 which comprise Comprehensive Income and Expenditure Statement, Movement in Reserves Statement, Balance Sheet, Cash Flow Statement and the related notes, including the Expenditure and Funding Analysis, Police Pension Fund Accounting Statement and the accounting policies in note 1.

We do not express an opinion on the financial statements. Due to the significance of the matters described in the Basis for disclaimer of opinion section of our report, we have not been able to obtain sufficient appropriate audit evidence to provide a basis for an audit opinion.

Basis for disclaimer of opinion

The Accounts and Audit (Amendment) Regulations 2024 (the "Amendment Regulations") require the Chief Constable to publish its financial statements and our opinion thereon for the year ended 31 March 2024 by 28 February 2025 (the "Backstop Date").

We have been unable to obtain sufficient appropriate audit evidence over a number of areas of the financial statements as we have been unable to perform the procedures that we consider necessary to form our opinion on the financial statements ahead of the Backstop Date. These areas were short term accumulating absences included within short term creditors; the disclosures of Officers' Remuneration, Exit Packages and Senior Officers and Relevant Police Officers Remuneration; the disclosures in the Police Pension Fund Accounting Statement; and the balance of, and movements in, usable and unusable reserves for the year ended 31 March 2024.

In addition, we have been unable to obtain sufficient appropriate evidence over the disclosed comparative figures for the year ended 31 March 2023 due to the Backstop Date. Therefore, we were unable to determine whether any adjustments were necessary to the opening balances as at 1 April 2023 or whether there were any consequential effects on the Chief Constable's income and expenditure for the year ended 31 March 2024.

Any adjustments from the above matters would have a consequential effect on the Chief Constable's net assets and the split between usable reserves and unusable reserves as at 31 March 2024 and 31 March 2023, and on its income and expenditure and cash flows for the years then ended.

Fraud and breaches of laws and regulations – ability to detect

As stated in the *Disclaimer of opinion* section of our report, we do not express an opinion on the financial statements due to the reasons described in the Basis for disclaimer of opinion section of our report.

Other information

The Chief Finance Officer is responsible for the other information, which comprises the information included in the Statement of Accounts, other than the financial statements and our auditor's report thereon. Any opinion on the financial statements would not cover the other information and we do not express an opinion or, except as explicitly stated below, any form of assurance conclusion thereon.

Our responsibility is to read the other information and, in doing so, consider whether, based on our financial statements audit work, the information therein is materially misstated or inconsistent with the financial statements or our audit knowledge.

Due to the significance of the matters described in the *Basis for disclaimer of opinion* section of our report, and the possible consequential effect on the related disclosures in the other

information, whilst in our opinion the other information included in the Statement of Accounts for the financial year is consistent with the financial statements, we are unable to determine whether there are material misstatements in the other information.

Chief Finance Officer's and Joint Audit Committee's responsibilities

As explained more fully in the statement set out on page 12, the Chief Finance Officer is responsible for the preparation of financial statements in accordance with CIPFA/LASAAC Code of Practice on Local Authority Accounting in the United Kingdom 2023/24 and that give a true and fair view. They are also responsible for: such internal control as they determine is necessary to enable the preparation of financial statements that are free from material misstatement, whether due to fraud or error; assessing the Chief Constable's ability to continue as a going concern, disclosing, as applicable, matters related to going concern; and using the going concern basis of accounting unless they have been informed by the government of the intention to either cease the services provided by the Chief Constable or dissolve the Chief Constable without the transfer of its services to another public sector entity.

The Joint Audit Committee is responsible for overseeing the Chief Constable's financial reporting process.

Auditor's responsibilities

Our responsibility is to conduct an audit of the financial statements in accordance with International Standards on Auditing (UK), and to issue an auditor's report. However, due to the significance of the matter described in the *Basis for disclaimer of opinion* section of our report, we were not able to obtain sufficient appropriate audit evidence to provide a basis for an audit opinion on the financial statements.

We have fulfilled our ethical responsibilities under, and are independent of the Chief Constable in accordance with, UK ethical requirements including the FRC Ethical Standard.

REPORT ON OTHER LEGAL AND REGULATORY MATTERS

Report on the Chief Constable's arrangements for securing economy, efficiency and effectiveness in its use of resources

Under the Code of Audit Practice published by the National Audit Office in November 2024 on behalf of the Comptroller and Auditor General (the "NAO Code of Audit Practice"), we are required to report to you if we identify any significant weaknesses in the arrangements that have been made by the Chief Constable to secure economy, efficiency and effectiveness in its use of resources.

We have nothing to report in this respect.

Respective responsibilities in respect of our review of arrangements for securing economy, efficiency and effectiveness in the use of resources

The Chief Constable is responsible for putting in place proper arrangements for securing economy, efficiency and effectiveness in its use of resources. We are required under section 20(1) of the Local Audit and Accountability Act 2014 to be satisfied that the Chief Constable has made proper arrangements for securing economy, efficiency and effectiveness in its use of resources.

We are not required to consider, nor have we considered, whether all aspects of the Chief Constable's arrangements for securing economy, efficiency and effectiveness in its use of resources are operating effectively. We are also not required to satisfy ourselves that the Chief Constable has achieved value for money during the year.

We planned our work and undertook our review in accordance with the NAO Code of Audit Practice and related statutory guidance, having regard to whether the Chief Constable had proper arrangements in place to ensure financial sustainability, proper governance and to use information about costs and performance to improve the way it manages and delivers its services. Based on our risk assessment, we undertook such work as we considered necessary.

Statutory reporting matters

We are required by Schedule 2 to the NAO Code of Audit Practice to report to you if:

- we issue a report in the public interest under section 24 and Schedule 7 of the Local Audit and Accountability Act 2014; or
- we make written recommendations to the Chief Constable under Section 24 and Schedule 7 of the Local Audit and Accountability Act 2014; or
- we make an application to the court for a declaration that an item of account is contrary to law under Section 28 of the Local Audit and Accountability Act 2014; or
- we issue an advisory notice under Section 29 of the Local Audit and Accountability Act 2014; or
- we make an application for judicial review under Section 31 of the Local Audit and Accountability Act 2014.

We have nothing to report in this respect.

THE PURPOSE OF OUR AUDIT WORK AND TO WHOM WE OWE OUR RESPONSIBILITIES

This report is made solely to the Chief Constable in accordance with Part 5 of the Local Audit and Accountability Act 2014. Our audit work has been undertaken so that we might state to the Chief Constable those matters we are required to state to the Chief Constable in an auditor's report and for no other purpose. To the fullest extent permitted by law, we do not accept or assume responsibility to anyone other than the Chief Constable for our audit work, for this report, or for the opinions we have formed.

DELAY IN CERTIFICATION OF COMPLETION OF THE AUDIT

As at the date of this audit report, we have not yet completed our work in respect of the Chief Constable's Whole of Government Accounts consolidation pack for the year ended 31 March 2024.

Until we have completed this work, we are unable to certify that we have completed the audit of the financial statements of the Chief Constable of Bedfordshire Police for the year ended 31 March 2024 in accordance with the requirements of the Local Audit and Accountability Act 2014 and the NAO Code of Audit Practice.



Catherine Henry

for and on behalf of KPMG LLP

Chartered Accountants

One Snowhill

Snow Hill Queensway

Birmingham

B4 6GH

28 February 2025